

MARKETS DIGEST re-submitted for clarity

EQUITIES

Dow Jones Industrial Average

33700.28 ▼45.41, or 0.13%
High, low, open and close for each trading day of the past three months.
Last Year ago
Trailing P/E ratio 20.95 22.11
P/E estimate* 18.36 18.53
Dividend yield 2.01 1.91
All-time high 36799.65, 01/04/22

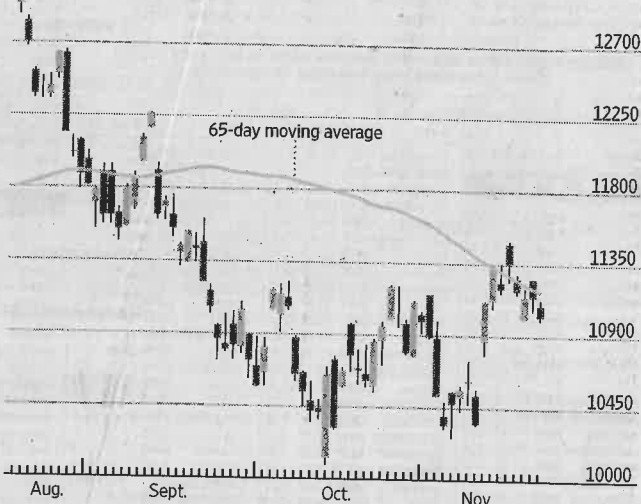
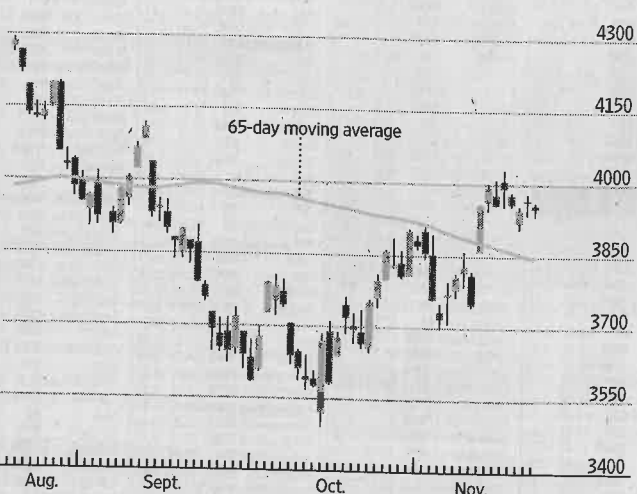
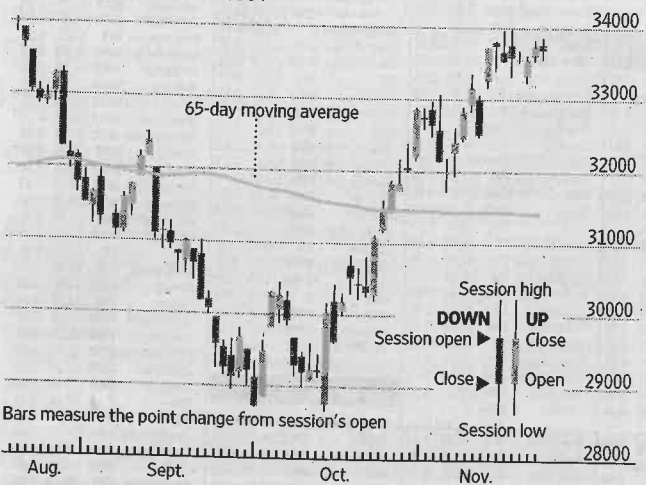
S&P 500 Index

3949.94 ▼15.40, or 0.39%
High, low, open and close for each trading day of the past three months.
Last Year ago
Trailing P/E ratio* 19.22 28.90
P/E estimate* 17.75 22.43
Dividend yield* 1.68 1.28
All-time high 4796.56, 01/03/22

Nasdaq Composite Index

11024.51 ▼121.55, or 1.09%
High, low, open and close for each trading day of the past three months.
Last Year ago
Trailing P/E ratio** 24.37 36.08
P/E estimate** 22.54 30.47
Dividend yield** 0.94 0.63
All-time high: 16057.44, 11/19/21

Current divisor 0.15172752595384



*Weekly P/E data based on as-reported earnings from Birinyi Associates Inc; **Based on Nasdaq-100 Index

Major U.S. Stock-Market Indexes

	High	Low	Latest Close	Net chg	% chg	High	52-Week Low	% chg	YTD	% chg 3-yr. ann.
Dow Jones										
Industrial Average	33864.59	33559.18	33700.28	-45.41	-0.13	36799.65	28725.51	-5.4	-7.3	6.7
Transportation Avg	14325.50	14179.35	14295.49	40.69	0.29	16874.53	11999.40	-14.6	-13.2	10.2
Utility Average	949.45	938.32	945.37	6.04	0.64	1071.75	838.99	2.6	-3.6	3.6
Total Stock Market	39795.09	39500.75	39668.06	-179.39	-0.45	48929.18	36056.21	-17.8	-18.4	7.7
Barron's 400	961.19	948.97	958.31	-2.87	-0.30	1114.47	825.73	-14.0	-13.4	10.9
Nasdaq Stock Market										
Nasdaq Composite	11128.78	10999.75	11024.51	-121.55	-1.09	15871.26	10321.39	-30.5	-29.5	9.0
Nasdaq-100	11664.94	11524.44	11553.45	-123.57	-1.06	16567.50	10690.60	-29.5	-29.2	11.8
S&P										
500 Index	3962.00	3933.34	3949.94	-15.40	-0.39	4796.56	3577.03	-15.7	-17.1	8.4
MidCap 400	2510.17	2492.71	2504.48	-6.15	-0.24	2875.24	2200.75	-12.9	-11.9	8.1
SmallCap 600	1215.32	1206.30	1214.15	-3.99	-0.33	1433.01	1064.45	-15.3	-13.4	7.8
Other Indexes										
Russell 2000	1842.96	1828.99	1839.14	-10.59	-0.57	2331.46	1649.84	-21.1	-18.1	5.1
NYSE Composite	15309.77	15180.19	15278.26	-31.51	-0.21	17353.76	13472.18	-9.8	-11.0	4.5
Value Line	554.75	549.40	552.30	-2.45	-0.44	680.36	491.56	-18.5	-17.8	1.5
NYSE Arca Biotech	5187.15	5143.96	5149.82	-35.15	-0.68	5649.54	4208.43	-4.5	-6.7	2.4
NYSE Arca Pharma	836.32	826.45	833.83	4.33	0.52	887.27	737.84	7.7	0.8	10.7
KBW Bank	106.46	105.52	106.22	0.35	0.34	147.56	94.66	-23.4	-19.7	-0.6
PHLX [§] Gold/Silver	113.19	111.17	113.04	-0.76	-0.67	167.76	91.40	-16.4	-14.7	6.4
PHLX [§] Oil Service	83.18	78.91	83.06	-1.95	-2.29	88.37	49.14	57.3	57.6	7.3
PHLX [§] Semiconductor	2696.70	2669.35	2675.83	-48.20	-1.77	4039.51	2162.32	-30.4	-32.2	16.5
Cboe Volatility	24.12	22.30	22.36	-0.76	-3.29	36.45	16.60	16.6	29.8	19.4

[§]Nasdaq PHLX

Sources: FactSet; Dow Jones Market Data

Late Trading

Most-active and biggest movers among NYSE, NYSE Arca, NYSE Amer. and Nasdaq issues from 4 p.m. to 6 p.m. ET as reported by electronic trading services, securities dealers and regional exchanges. Minimum share price of \$2 and minimum after-hours volume of 50,000 shares.

Most-active issues in late trading

Company	Symbol	Volume (000)	Last	Net chg	After Hours % chg	High	Low
Invesco Senior Loan ETF	BKLN	6,514.7	20.73	0.03	0.14	20.78	20.71
SPDR S&P 500	SPY	6,390.2	394.57	-0.02	-0.01	400.00	369.35
KE Holdings ADR	BEKE	4,940.3	14.86	0.15	1.02	14.86	14.71
iShares iBoxx \$ HY Cp Bd	HYG	4,676.2	74.17	-0.03	-0.04	74.29	74.17
Bank of America	BAC	3,913.7	37.28	-0.03	-0.08	37.37	34.95
CSX	CSX	3,680.4	31.29	...	unch.	31.32	30.50
Infosys ADR	INFY	3,091.4	19.12	-0.18	-0.93	19.38	19.12
iShares MSCI EAFE ETF	EFA	3,089.7	64.48	-0.18	-0.28	64.67	64.48

Percentage gainers...

Harsco	HSC	320.6	6.93	0.33	5.00	6.93	6.60
Simmons First Natl CIA	SFNC	63.3	24.76	1.17	4.96	24.76	23.59
Agilent Technologies	A	104.4	151.30	6.16	4.24	152.40	143.50
Newell Brands	NWL	153.1	13.55	0.50	3.83	13.55	13.05
Ardagh Metal Packaging	AMBP	281.9	4.54	0.16	3.65	4.54	4.38

...And losers

scPharmaceuticals	SCPH	51.0	5.40	-0.69	-11.33	6.09	4.25
Gallagher	AJG	81.6	175.37	-20.38	-10.41	195.75	175.37
Ampco-Pittsburgh	AP	1,776.6	2.50	-0.25	-9.09	2.50	2.50
Gaming Leisure Prop	GLPI	68.7	46.41	-4.09	-8.10	50.50	46.41
FirstEnergy	FE	145.0	36.41	-2.20	-5.70	38.80	36.41

Trading Diary

Volume, Advancers, Decliners

	NYSE	NYSE Amer.
Total volume*	802,776,744	8,998,332
Adv. volume*	325,346,059	2,865,523
Decl. volume*	471,335,086	5,979,684
Issues traded	3,294	300
Advances	1,471	95
Declines	1,698	195
Unchanged	125	10
New highs	53	...
New lows	59	18
Closing Arms [†]	1.35	1.61
Block trades*	4,469	85

	Nasdaq	NYSE Arca
Total volume*	3,977,137,459	221,240,459
Adv. volume*	1,116,987,778	66,200,130
Decl. volume*	2,823,066,060	151,542,106
Issues traded	4,920	1,737
Advances	1,794	526
Declines	2,869	1,183
Unchanged	257	28
New highs	99	2
New lows	278	16
Closing Arms [†]	1.58	0.94
Block trades*	23,477	849

*Primary market NYSE, NYSE American NYSE Arca only.
†(TRIN) A comparison of the number of advancing and declining issues with the volume of shares rising and falling. An Arms of less than 1 indicates buying demand; above 1 indicates selling pressure.

OFFICIAL COPY
Nov 29 2022