



LEGEND

DUKE PROPERTY BOUNDARY

COMPLIANCE BOUNDARY

WASTE BOUNDARY

VOLUNTARY GROUNDWATER MONITORING WELL
(FIRST SAMPLED IN 2006)

VOLUNTARY GROUNDWATER MONITORING WELL
(FIRST SAMPLED IN 2007)

VOLUNTARY GROUNDWATER MONITORING WELL
AT COMPLIANCE BOUNDARY (FIRST SAMPLED IN
2007)

COMPLIANCE GROUNDWATER MONITORING
WELL (FIRST SAMPLED IN 2011)

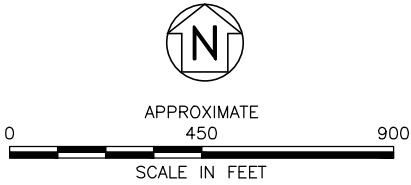
BACKGROUND WELL NEAR THE COMPLIANCE
BOUNDARY (FIRST SAMPLED IN 2010 AND 2012*)

GROUNDWATER FLOW DIRECTION

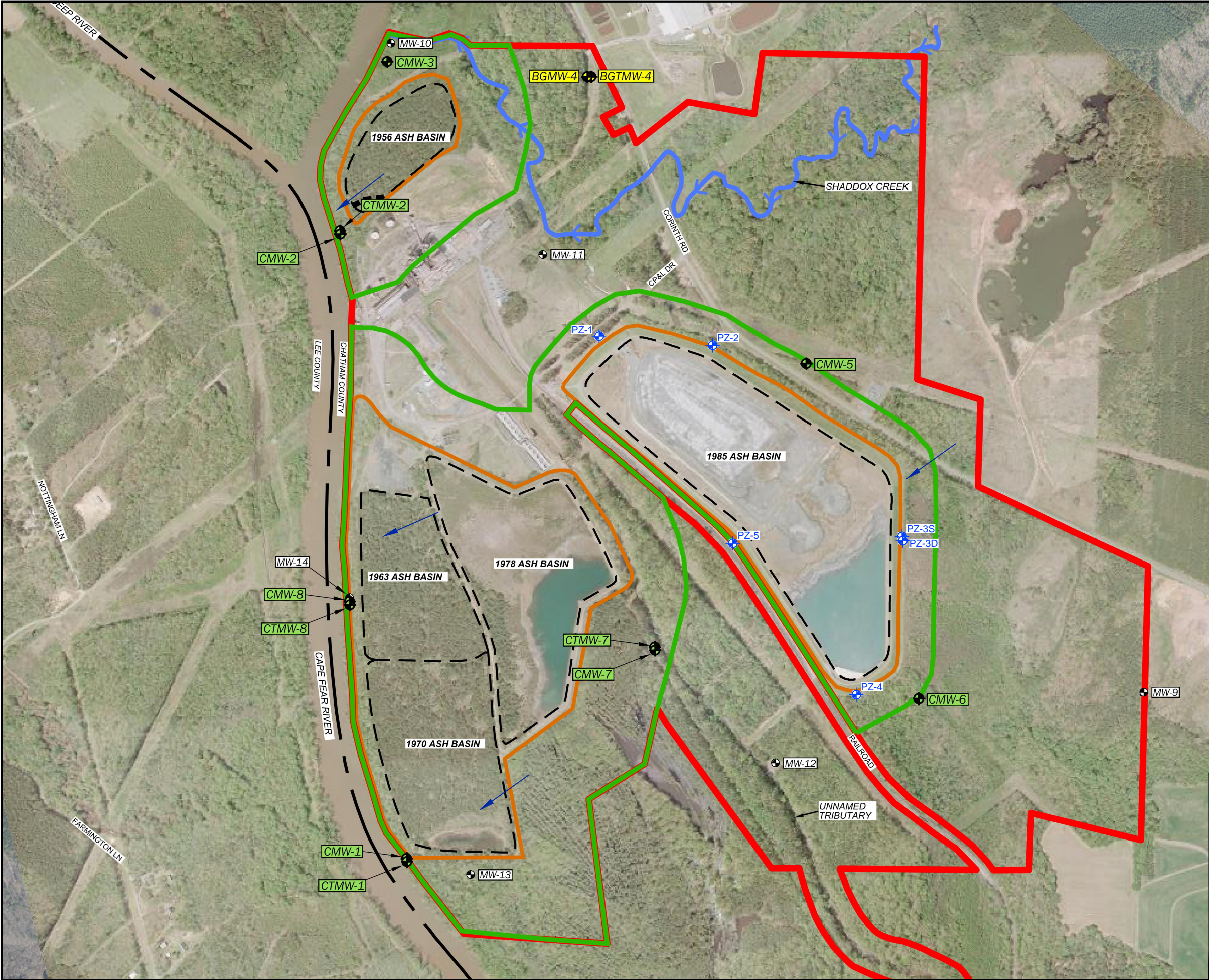
- NOTES:
1.

BASEMAP MODIFIED FROM SEPTEMBER 25, 2014
SITE LAYOUT MAP PREPARED BY SYNTERRA.
BASEMAP INCLUDES PROPERTY, WASTE, AND
COMPLIANCE BOUNDARIES AND THE
COMPLIANCE GROUNDWATER MONITORING WELL
LOCATIONS.
2.

* = BACKGROUND WELL CB-9 WAS FIRST
SAMPLED IN 2012.



TITLE		SITE MAP	
PROJECT		ASHEVILLE STEAM ELECTRIC PLANT ARDEN, NORTH CAROLINA	
<div><div>hart hickman</div><div>SMARTER ENVIRONMENTAL SOLUTIONS</div></div>		2923 South Tryon Street-Suite 100 Charlotte, North Carolina 28203 704-586-0007(p) 704-586-0373(f) License # C-1269 / #C-245 Geology	
DATE: 3-14-20		REVISION NO. 0	
JOB NO. DEP.001		EXHIBIT	



LEGEND

DUKE PROPERTY BOUNDARY

COMPLIANCE BOUNDARY

WASTE BOUNDARY

VOLUNTARY GROUNDWATER MONITORING WELL
(FIRST SAMPLED IN 2007)

COMPLIANCE GROUNDWATER MONITORING WELL
(FIRST SAMPLED IN 2010)

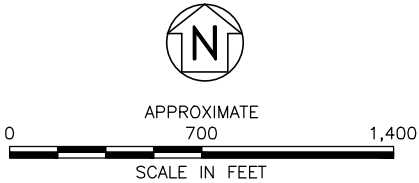
BACKGROUND WELL NEAR THE COMPLIANCE
BOUNDARY (FIRST SAMPLED IN 2010)

CLOSURE EVALUATION GROUNDWATER
MONITORING WELL (FIRST SAMPLED IN 2013)

GROUNDWATER FLOW DIRECTION

- NOTES:
1.

BASEMAP MODIFIED FROM DECEMBER 29, 2014
SITE LAYOUT MAP PREPARED BY SYNTERRA.
BASEMAP INCLUDES PROPERTY, WASTE, AND
COMPLIANCE BOUNDARIES, THE COMPLIANCE
GROUNDWATER MONITORING WELL LOCATIONS,
AND THE 2013 VOLUNTARY MONITORING WELL
LOCATIONS.



TITLE	SITE MAP	
PROJECT	CAPE FEAR STEAM ELECTRIC PLANT MONCURE, NORTH CAROLINA	
	<div><div><div>hart</div><div><div></div><div>hickman</div></div></div><div>SMARTER ENVIRONMENTAL SOLUTIONS</div></div>	<div>2923 South Tryon Street-Suite 100 Charlotte, North Carolina 28203 704-586-0007(p) 704-586-0373(f) License # C-1269 / #C-245 Geology</div>
DATE: 3-14-20	REVISION NO. 0	
JOB NO. DEP.001	EXHIBIT 44A	



LEGEND

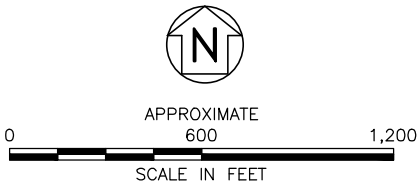
DUKE PROPERTY BOUNDARY

COMPLIANCE BOUNDARY

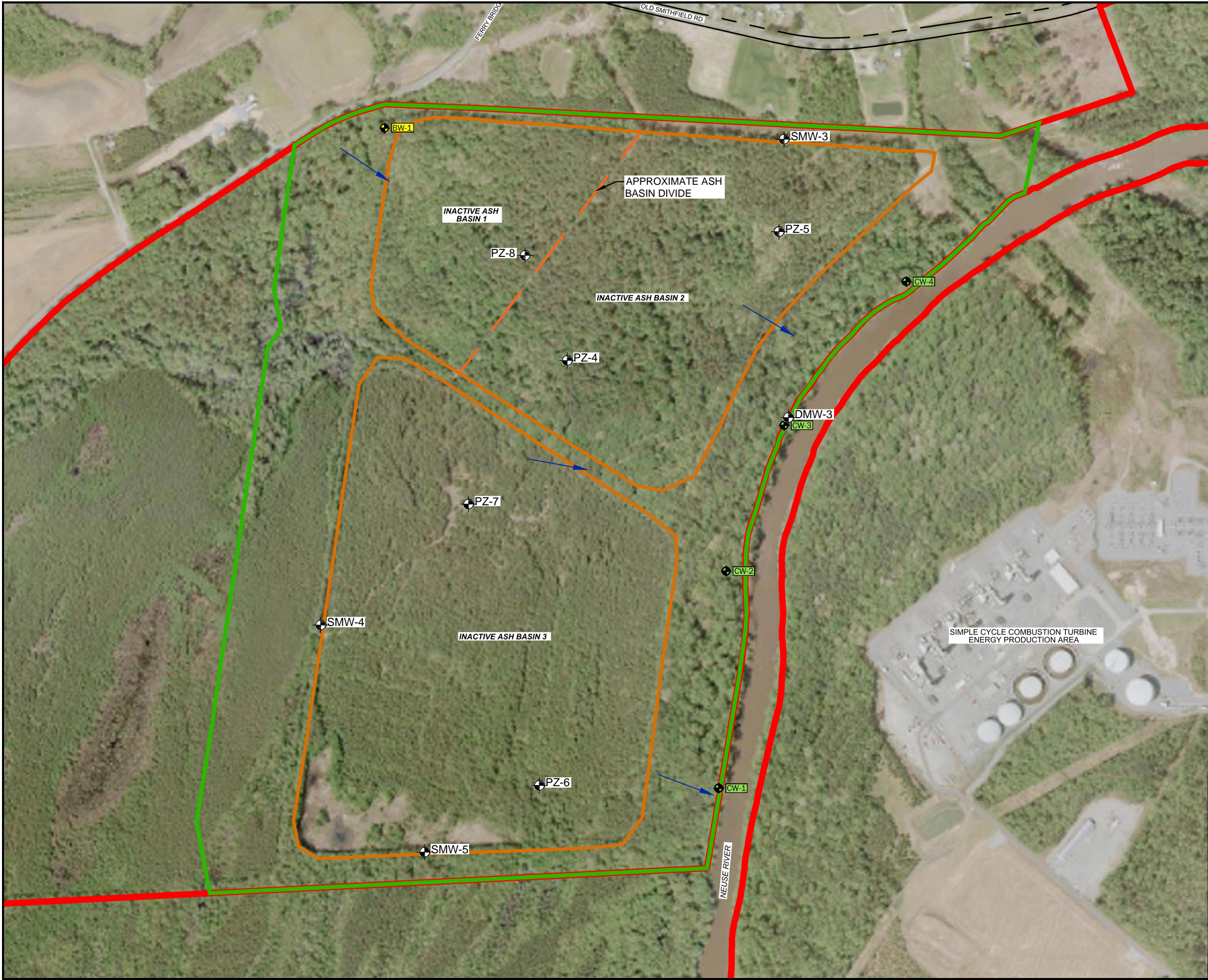
- NOTES:
1.

BASEMAP MODIFIED FROM DECEMBER 17, 2014
SITE LAYOUT MAP PREPARED BY SYNTERRA.
BASEMAP INCLUDES PROPERTY, WASTE, AND
COMPLIANCE BOUNDARIES AND THE
COMPLIANCE GROUNDWATER MONITORING WELL
LOCATIONS.
2.

* = BGMW-10 FIRST SAMPLED IN 2012.

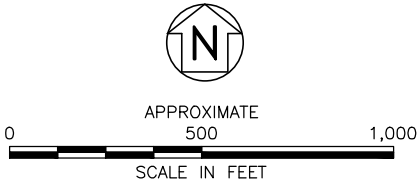


TITLE	SITE MAP - ACTIVE BASIN	
PROJECT	H.F. LEE ENERGY COMPLEX GOLDSBORO, NORTH CAROLINA	
	<div><div><div>hart</div><div><div></div><div>hickman</div></div></div><div>SMARTER ENVIRONMENTAL SOLUTIONS</div></div> <div>2923 South Tryon Street-Suite 100 Charlotte, North Carolina 28203 704-586-0007(p) 704-586-0373(f) License # C-1269 / #C-245 Geology</div>	
DATE: 3-14-20	REVISION NO. 0	
JOB NO. DEP.001	EXHIBIT 45A	

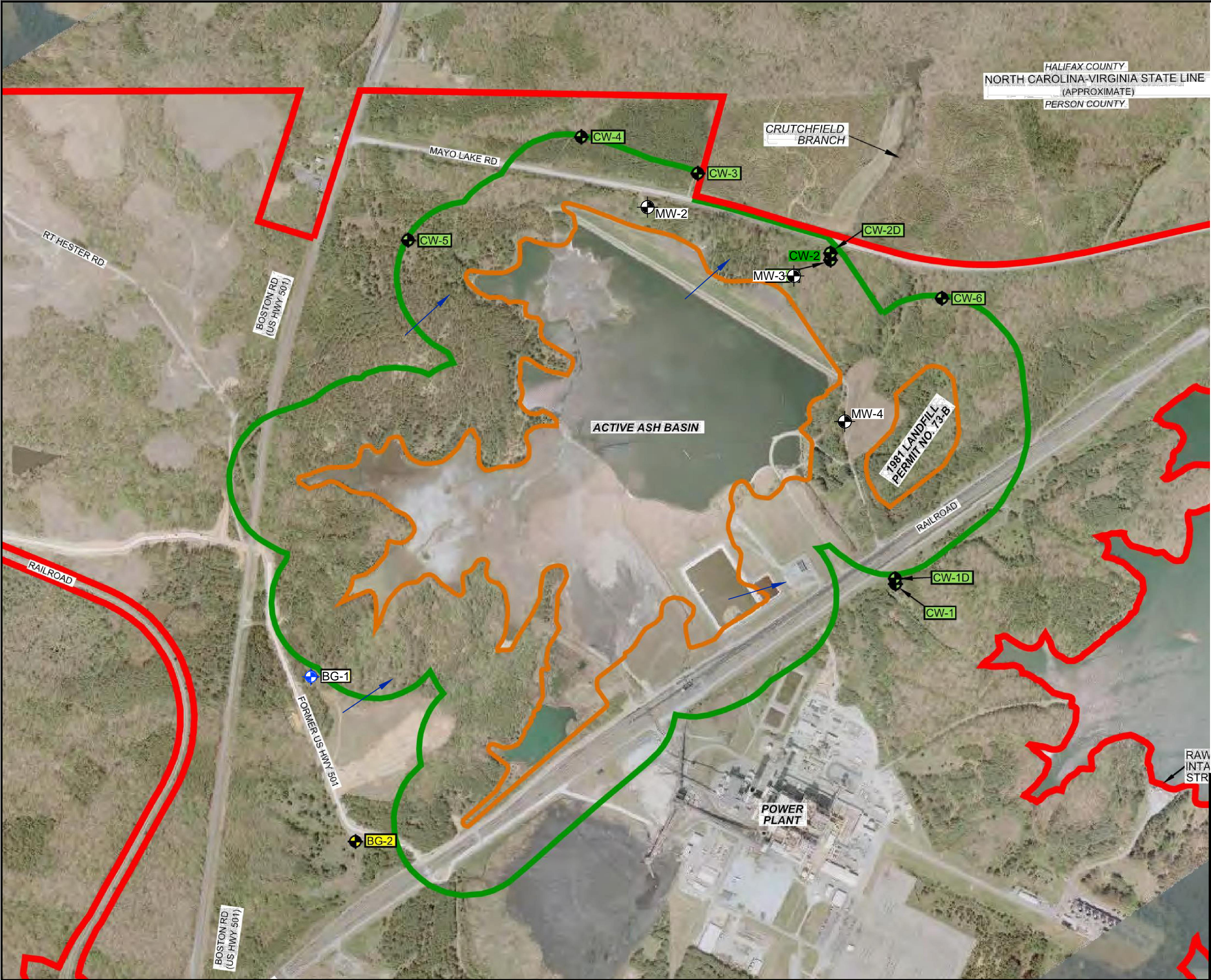


- LEGEND**
- DUKE PROPERTY BOUNDARY
 - COMPLIANCE BOUNDARY
 - WASTE BOUNDARY
 - COMPLIANCE GROUNDWATER MONITORING WELL (FIRST SAMPLED IN 2011)
 - BACKGROUND WELL NEAR THE COMPLIANCE BOUNDARY (FIRST SAMPLED IN 2011)
 - CLOSURE EVALUATION GROUNDWATER WELL (FIRST SAMPLED IN 2013)
 - GROUNDWATER FLOW DIRECTION

- NOTES:**
- BASEMAP MODIFIED FROM DECEMBER 17, 2014 SITE LAYOUT MAP PREPARED BY SYNTERRA. BASEMAP INCLUDES PROPERTY, WASTE, AND COMPLIANCE BOUNDARIES AND THE COMPLIANCE GROUNDWATER MONITORING WELL LOCATIONS.



TITLE	SITE MAP - INACTIVE BASINS	
PROJECT	H.F. LEE ENERGY COMPLEX GOLDSBORO, NORTH CAROLINA	
<div><div><div>hart</div><div><div></div><div>hickman</div></div></div><div>SMARTER ENVIRONMENTAL SOLUTIONS</div></div> <div>2923 South Tryon Street-Suite 100 Charlotte, North Carolina 28203 704-586-0007(p) 704-586-0373(f) License # C-1269 / #C-245 Geology</div>		
DATE: 3-14-20	REVISION NO. 0	
JOB NO. DEP.001	EXHIBIT 45A	

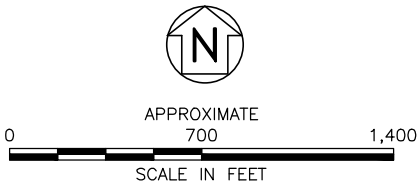


LEGEND

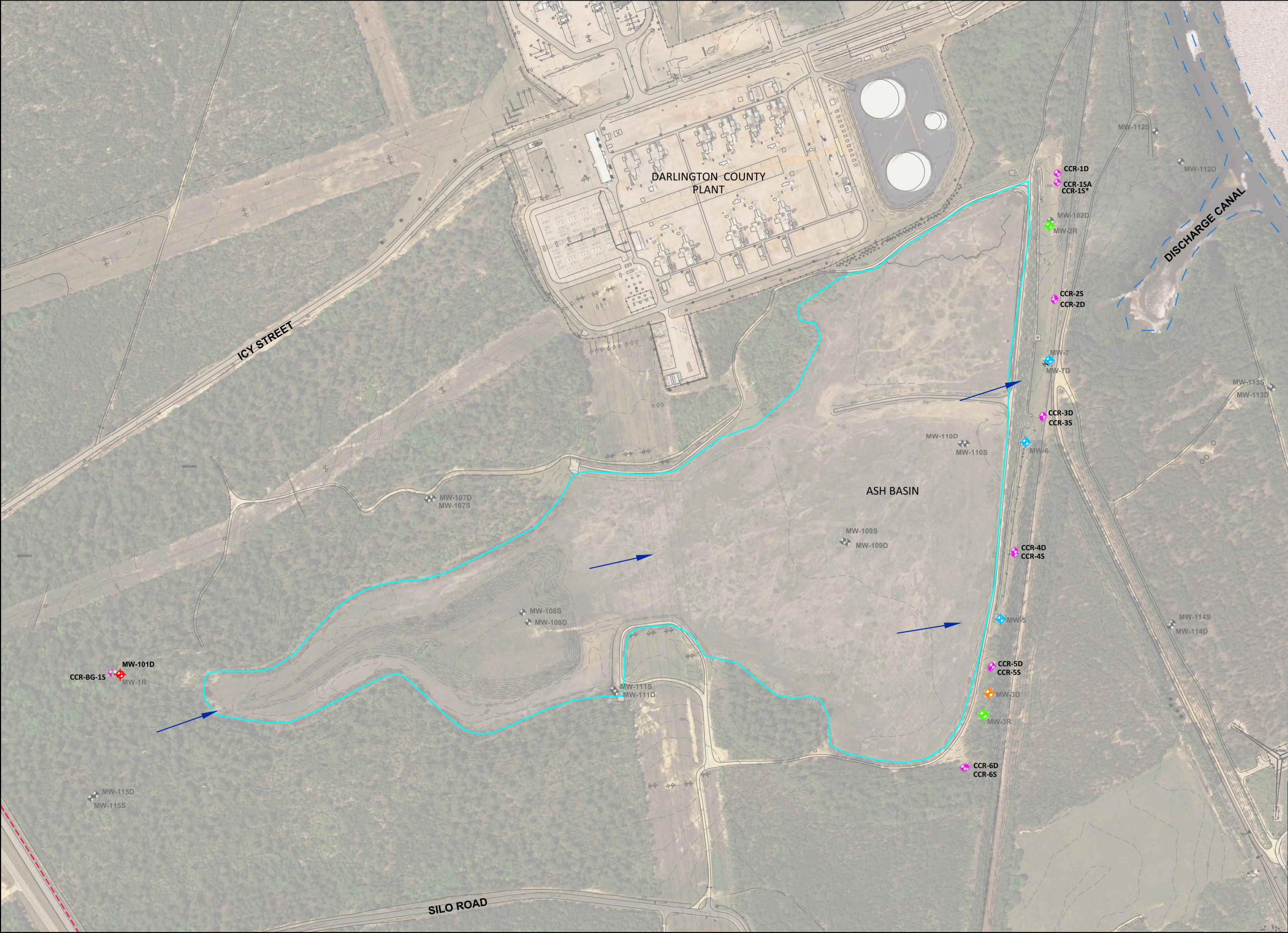
DUKE PROPERTY BOUNDARY

COMPLIANCE BOUNDARY

- NOTES:
- BASEMAP MODIFIED FROM DECEMBER 22, 2014
SITE LAYOUT MAP PREPARED BY SYNTERRA.
BASEMAP INCLUDES PROPERTY, WASTE, AND
COMPLIANCE BOUNDARIES AND THE
COMPLIANCE GROUNDWATER MONITORING WELL
LOCATIONS.



TITLE SITE MAP	
PROJECT MAYO STEAM ELECTRIC PLANT ROXBORO, NORTH CAROLINA	
<div><div><div>hart</div><div>hickman</div></div><div>SMARTER ENVIRONMENTAL SOLUTIONS</div></div> <div>2923 South Tryon Street-Suite 100 Charlotte, North Carolina 28203 704-586-0007(p) 704-586-0373(f) License # C-1269 / #C-245 Geology</div>	
DATE: 3-14-20	REVISION NO. 0
JOB NO. DEP.001	EXHIBIT 46A

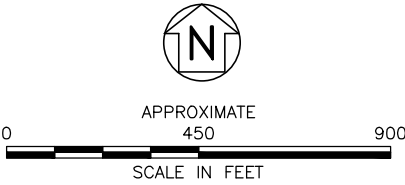



LEGEND

- WASTE BOUNDARY
- VOLUNTARY GROUNDWATER MONITORING WELL (FIRST SAMPLED IN 1995)
- BACKGROUND GROUNDWATER MONITORING WELL (FIRST SAMPLED IN 1995)
- GROUNDWATER MONITORING WELL (SAMPLED ONCE IN 2014)
- MONITORING WELL (FIRST SAMPLED IN 2014)
- CCR GROUNDWATER MONITORING WELL (FIRST SAMPLED IN 2016)
- NO AVAILABLE DATA
- GROUNDWATER FLOW DIRECTION

NOTES:

- BASEMAP MODIFIED FROM SEPTEMBER 2017 SITE LAYOUT MAP PREPARED BY HDR. BASEMAP INCLUDES WASTE BOUNDARY AND THE GROUNDWATER MONITORING WELL LOCATIONS.



TITLE	SITE MAP	
PROJECT	H.B. ROBINSON STEAM ELECTRIC PLANT HARTSVILLE, SOUTH CAROLINA	
	 SMARTER ENVIRONMENTAL SOLUTIONS	2923 South Tryon Street-Suite 100 Charlotte, North Carolina 28203 704-586-0007(p) 704-586-0373(f) License # C-1269 / #C-245 Geology
DATE: 3-14-20	REVISION NO. 0	
JOB NO. DEP.001	EXHIBIT 47A	



LEGEND

DUKE PROPERTY BOUNDARY

COMPLIANCE BOUNDARY

WASTE BOUNDARY

VOLUNTARY GROUNDWATER MONITORING WELL
(FIRST SAMPLED IN 2000)

LANDFILL GROUNDWATER MONITORING WELL
(FIRST SAMPLED IN 2002)

COMPLIANCE GROUNDWATER MONITORING WELL
(FIRST SAMPLED IN 2010)

BACKGROUND WELL NEAR THE COMPLIANCE
BOUNDARY (FIRST SAMPLED IN 2010)

GROUNDWATER FLOW DIRECTION

- NOTES:
1.

BASEMAP MODIFIED FROM DECEMBER 8, 2014
SITE LAYOUT MAP PREPARED BY SYNTERRA.
BASEMAP INCLUDES PROPERTY, WASTE, AND
COMPLIANCE BOUNDARIES, THE VOLUNTARY
LANDFILL MONITORING WELL LOCATIONS, AND
THE COMPLIANCE GROUNDWATER MONITORING
WELL LOCATIONS.

TITLE	SITE MAP	
PROJECT	ROXBORO STEAM ELECTRIC PLANT SEMORA, NORTH CAROLINA	
	<div><div><div>hart</div><div><div></div><div>hickman</div></div></div><div>SMARTER ENVIRONMENTAL SOLUTIONS</div></div>	2923 South Tryon Street-Suite 100 Charlotte, North Carolina 28203 704-586-0007(p) 704-586-0373(f) License # C-1269 / #C-245 Geology
DATE: 3-14-20	REVISION NO. 0	
JOB NO. DEP.001	EXHIBIT 48A	



LEGEND

DUKE PROPERTY BOUNDARY

COMPLIANCE BOUNDARY

WASTE BOUNDARY

GROUNDWATER MONITORING WELL (FIRST SAMPLED IN 1990)

GROUNDWATER MONITORING WELLS INCLUDED AS COMPLIANCE WELLS (FIRST SAMPLED IN 1990)

FADA GROUNDWATER MONITORING WELL (FIRST SAMPLED IN 1991/1992/1993/1994)

COMPLIANCE GROUNDWATER MONITORING WELL (FIRST SAMPLED IN 1993)

COMPLIANCE GROUNDWATER MONITORING WELL (FIRST SAMPLED IN 2011)

BACKGROUND WELL OUTSIDE THE COMPLIANCE BOUNDARY (FIRST SAMPLED IN 1990)

ADDITIONAL MONITORING WELL (FIRST SAMPLED 2013)

GROUNDWATER FLOW DIRECTION

NOTES:

1. BASEMAP MODIFIED FROM DECEMBER 24, 2014 SITE LAYOUT MAP PREPARED BY SYNTERRA. BASEMAP INCLUDES PROPERTY, WASTE, AND COMPLIANCE BOUNDARIES AND THE COMPLIANCE GROUNDWATER MONITORING WELL LOCATIONS.

APPROXIMATE
1,000
2,000
SCALE IN FEET

TITLE

SITE MAP

PROJECT

L.V. SUTTON ENERGY COMPLEX
WILMINGTON, NORTH CAROLINA

hart

hickman

SMARTER ENVIRONMENTAL SOLUTIONS

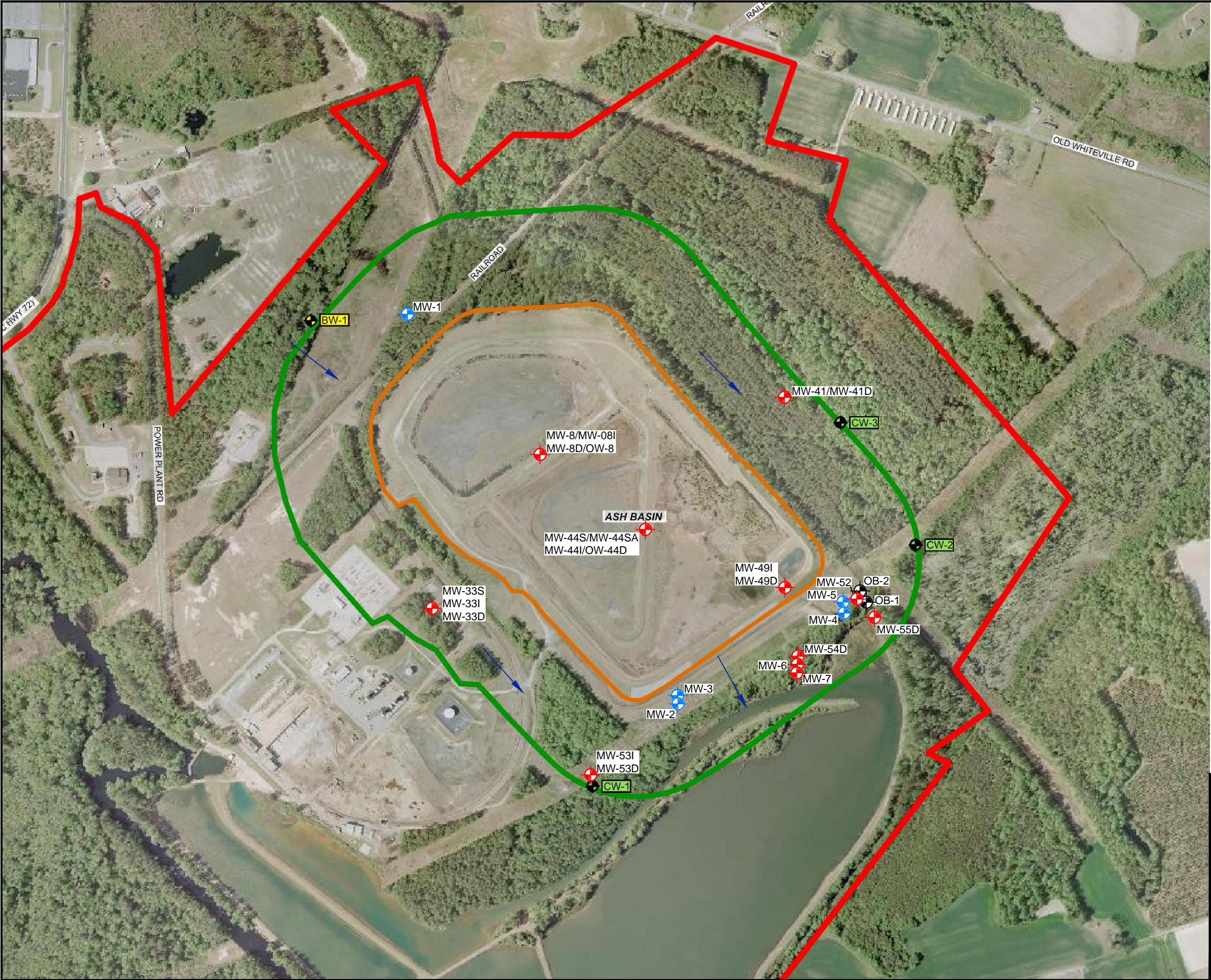
2923 South Tryon Street-Suite 100
Charlotte, North Carolina 28203
704-586-0007(p) 704-586-0373(f)
License # C-1269 / #C-245 Geology

DATE: 3-14-20

REVISION NO. 0

JOB NO. DEP.001

EXHIBIT 49A



LEGEND

- DUKE PROPERTY BOUNDARY
- COMPLIANCE BOUNDARY
- WASTE BOUNDARY
- VOLUNTARY GROUNDWATER MONITORING WELL (FIRST SAMPLED IN 1990)
- COMPLIANCE GROUNDWATER MONITORING WELL (FIRST SAMPLED IN 2010)
- BACKGROUND WELL NEAR THE COMPLIANCE BOUNDARY (FIRST SAMPLED IN 2010)
- GROUNDWATER MONITORING WELL (FIRST SAMPLED IN 2011/2012)
- GROUNDWATER MONITORING WELL (FIRST SAMPLED IN 2013)
- GROUNDWATER FLOW DIRECTION

NOTES:

- BASEMAP MODIFIED FROM NOVEMBER 21, 2014 SITE LAYOUT MAP PREPARED BY SYNTERRA. BASEMAP INCLUDES PROPERTY, WASTE, AND COMPLIANCE BOUNDARIES AND THE COMPLIANCE GROUNDWATER MONITORING WELL LOCATIONS.

APPROXIMATE
0 500 1,000
SCALE IN FEET

TITLE SITE MAP	
PROJECT WEATHERSPOON POWER PLANT LUMBERTON, NORTH CAROLINA	
<div><div> SMARTER ENVIRONMENTAL SOLUTIONS</div><div>2923 South Tryon Street-Suite 100 Charlotte, North Carolina 28203 704-586-0007(p) 704-586-0373(f) License # C-1269 / #C-245 Geology</div></div>	
DATE: 3-14-20	REVISION NO. 0
JOB NO. DEP.001	EXHIBIT 50A