

EXHIBIT A

TO

PRE-FILED DIRECT TESTIMONY OF
CHRISTOPHER KILLENBERG
ON BEHALF OF HALIFAX COUNTY SOLAR LLC
NCUC DOCKET NO. EMP-107, SUB 0

THIS DRAWING IS THE PROPERTY OF COMMUNITY ENERGY SOLAR, LLC. IT IS TO BE USED ONLY IN CONNECTION WITH THE ABOVE TITLED PROJECT FOR WHICH IT WAS DESIGNED. NO PART OF THIS DRAWING IS TO BE REPRODUCED OR TRANSMITTED IN ANY FORM OR BY ANY MEANS, ELECTRONIC OR MECHANICAL, INCLUDING PHOTOCOPYING, RECORDING, OR BY ANY INFORMATION STORAGE AND RETRIEVAL SYSTEM, WITHOUT THE WRITTEN PERMISSION OF COMMUNITY ENERGY SOLAR, LLC. ALL RIGHTS RESERVED.

DATE: 07/18/19
 SHEET NO.:
 SCALE: AS NOTED
 DRAWN BY: GR
 CHECKED BY: GR

SHEET TITLE:
 OVERALL SITE PLAN



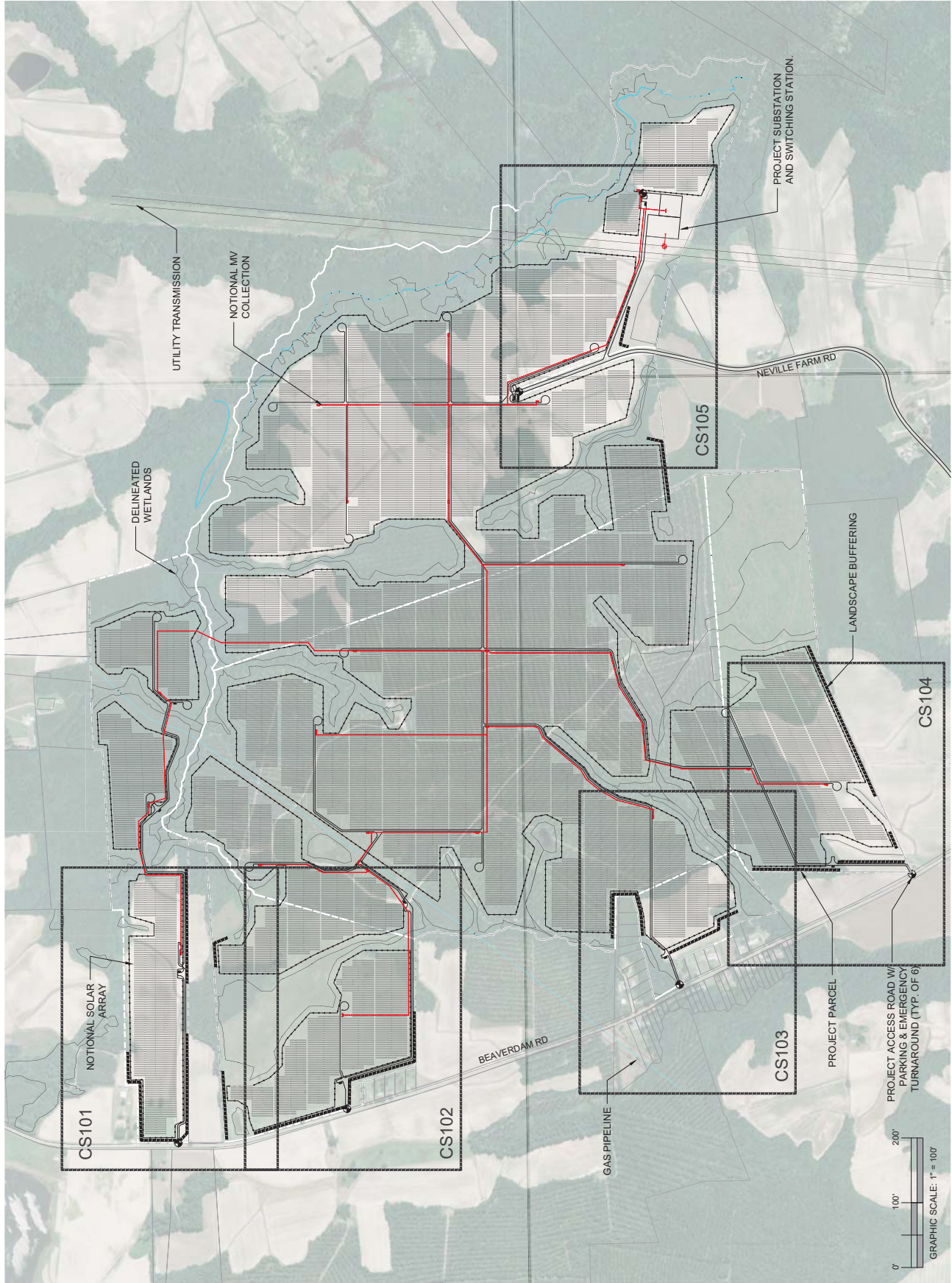
LAT/LONG: 36.246188,-77.683410

LOCATION: HALIFAX CNTY, NC

HALIFAX SOLAR - 80 MW-AC PV PROJECT



COMMUNITY ENERGY SOLAR, LLC
 9 RAVENOR CORPORATE CENTER, SUITE 500
 100 MASON RD
 RAVENOR, PA 19087
 (484) 654-1877





LAT/LONG: 36.246188, -77.683410

LOCATION: HALIFAX CNTY, NC



HALIFAX SOLAR - 80 MW-AC PV PROJECT

ENLARGED PLAN
 AREA 1

CS101

AS NOTED

07.18.19

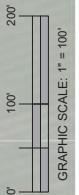
SHEET NO.

CHECKED BY: GR

DATE: 07.18.19

SHEET NO.

THIS DRAWING IS THE PROPERTY OF COMMUNITY ENERGY SOLAR, LLC. IT IS TO BE USED ONLY IN CONNECTION WITH THE ABOVE TITLED PROJECT FOR WHICH IT WAS PREPARED. NO PART OF THIS DRAWING IS TO BE REPRODUCED OR TRANSMITTED IN ANY FORM OR BY ANY MEANS, ELECTRONIC OR MECHANICAL, INCLUDING PHOTOCOPYING, RECORDING, OR BY ANY INFORMATION STORAGE AND RETRIEVAL SYSTEM, WITHOUT PERMISSION IN WRITING FROM COMMUNITY ENERGY SOLAR, LLC. (CES) ALL RIGHTS RESERVED.



THIS DRAWING IS THE PROPERTY OF COMMUNITY ENERGY SOLAR, LLC (CES) AND IS NOT TO BE REPRODUCED OR TRANSMITTED IN ANY FORM OR BY ANY MEANS, ELECTRONIC OR MECHANICAL, INCLUDING PHOTOCOPYING, RECORDING, OR BY ANY INFORMATION STORAGE AND RETRIEVAL SYSTEM, WITHOUT THE WRITTEN PERMISSION OF COMMUNITY ENERGY SOLAR, LLC. ALL RIGHTS RESERVED.

DATE: 07.18.19
SHEET NO. CS102

CHECKED BY: GR
DRAWN BY: GR

SCALE: AS NOTED

DATE: 07.18.19
SHEET NO. CS102

SHEET TITLE: ENLARGED PLAN AREA 2



LAT/LONG: 36.246188,-77.683410

LOCATION: HALIFAX CNTY, NC

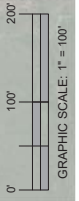
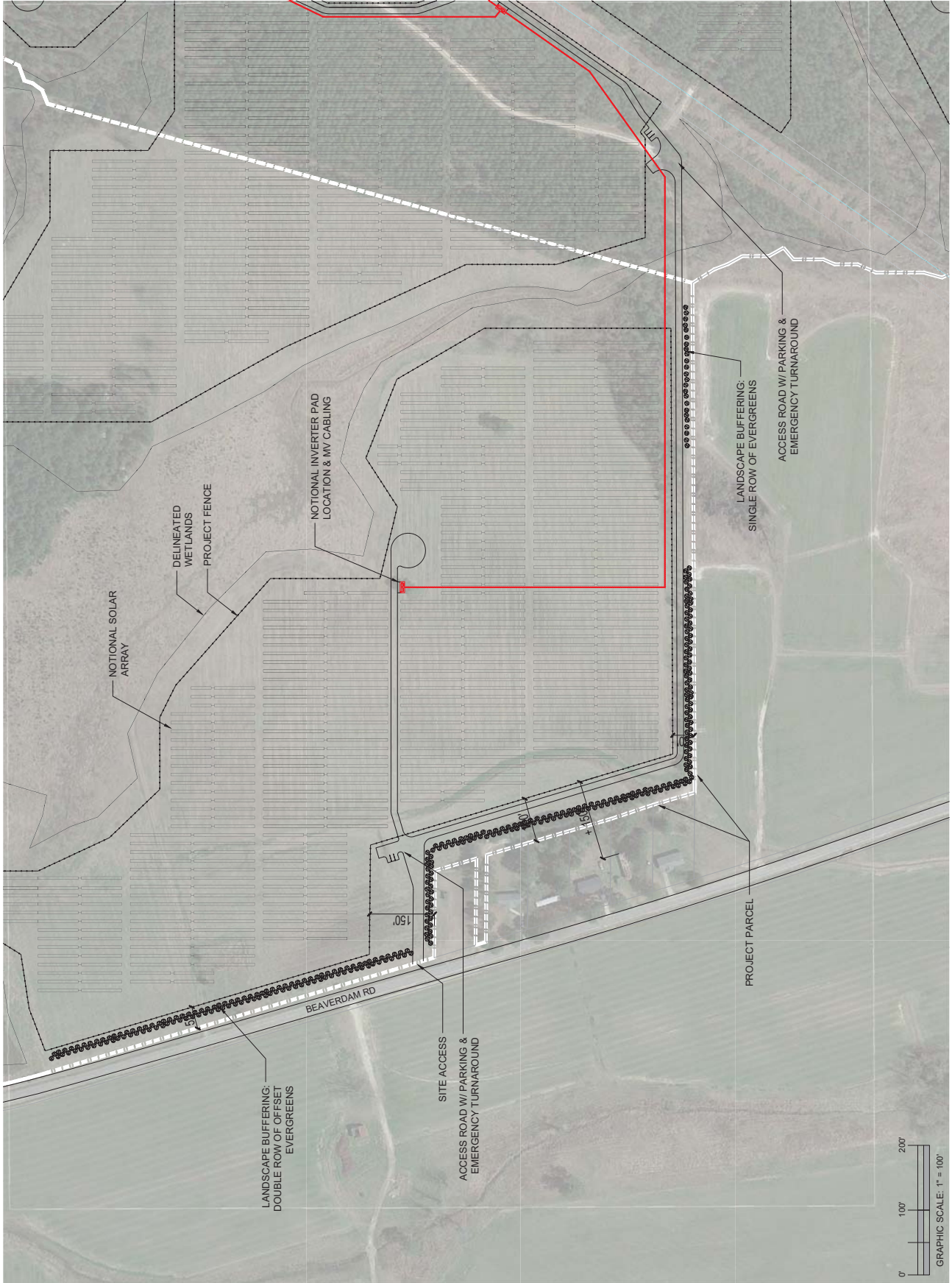
HALIFAX SOLAR - 80 MW-AC PV PROJECT



COMMUNITY ENERGY SOLAR



5 RAVENOR CORPORATE CENTER, SUITE 500
RAVENOR, PA 19087
(484) 654-1877



5 RAVENOR CORPORATE CENTER, SUITE 500
 100 MATSON RD
 RANDOLPH, PA 19087
 (484) 654-1877



LAT/LONG: 36.246188,-77.683410

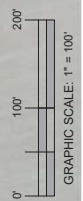
LOCATION: HALIFAX CNTY, NC



HALIFAX SOLAR - 80 MW-AC PV PROJECT

ENLARGED PLAN
 AREA 3

SHEET TITLE	
ENLARGED PLAN AREA 3	
DATE: 07.18.19	SHEET NO.
SCALE: AS NOTED	
DRAWN BY: GR	
CHECKED BY: GR	
THIS DRAWING IS THE PROPERTY OF COMMUNITY ENERGY SOLAR, LLC. IT IS TO BE USED ONLY IN CONNECTION WITH THE ABOVE TITLED PROJECT FOR WHICH IT WAS DRAWN.	
ELECTRIC DESIGN SHALL BE RECOMMENDED WITH THE LOCAL ELECTRIC GRID AT THE DISTRIBUTION LEVEL.	
CONSTRUCTION SHALL BE IN ACCORDANCE WITH ALL APPLICABLE REGULATIONS AND PERMITS.	
CS103	



Aug 30 2019

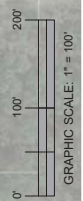
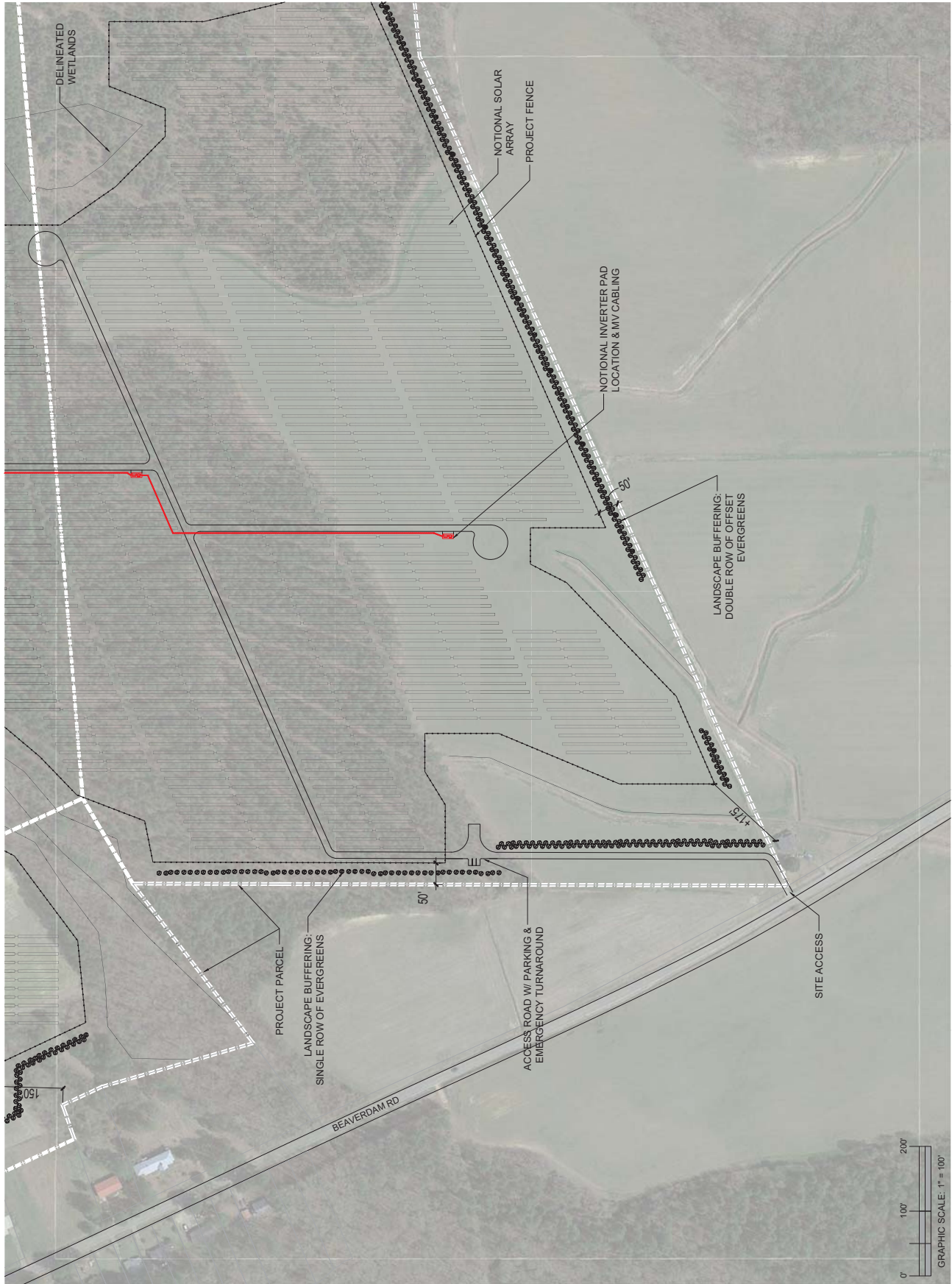
OFFICIAL COPY

SHEET TITLE		ENLARGED PLAN AREA 4	
DATE: 07.18.19		SHEET NO.	
SCALE: AS NOTED		DRAWN BY: GR	
CHECKED BY: GR		CS104	
<small>THIS DRAWING IS THE PROPERTY OF COMMUNITY ENERGY SOLAR, LLC. IT IS TO BE USED ONLY IN CONNECTION WITH THE ABOVE TITLED PROJECT FOR WHICH IT WAS PREPARED. NO OTHER USES ARE PERMITTED WITHOUT THE WRITTEN CONSENT OF COMMUNITY ENERGY SOLAR, LLC. ALL RIGHTS RESERVED. ELECTRIC CONDUIT SHALL BE RECOMMENDED WITH THE LOCAL ELECTRIC CODES AND REGULATIONS OF A LOCAL JURISDICTION.</small>			



LOCATION: HALIFAX CNTY, NC		
LAT/LONG: 36.246188,-77.683410		
HALIFAX SOLAR - 80 MW-AC PV PROJECT		

COMMUNITY ENERGY SOLAR, LLC
 5 RAVENOR CORPORATE CENTER, SUITE 500
 FARMINGTON, PA 19087
 (484) 654-1877



SHEET TITLE	
ENLARGED PLAN AREA 5	
DATE: 07.18.19	SHEET NO.
SCALE: AS NOTED	
DRAWN BY: GR	
CHECKED BY: GR	
THIS DRAWING IS THE PROPERTY OF COMMUNITY ENERGY SOLAR, LLC. IT IS TO BE USED ONLY IN CONNECTION WITH THE ABOVE TITLED PROJECT FOR WHICH IT WAS CREATED. NO PART OF THIS DRAWING IS TO BE REPRODUCED OR TRANSMITTED IN ANY FORM OR BY ANY MEANS, ELECTRONIC OR MECHANICAL, INCLUDING PHOTOCOPYING, RECORDING, OR BY ANY INFORMATION STORAGE AND RETRIEVAL SYSTEM, WITHOUT THE WRITTEN PERMISSION OF COMMUNITY ENERGY SOLAR, LLC.	



LOCATION: HALIFAX CNTY, NC	
LAT/LONG: 36.246188,-77.683410	

5 RAVINE CORPORATE CENTER, SUITE 300
 RAVINOR, PA 19087
 (484) 654-1877
COMMUNITY ENERGY SOLAR, LLC

