

# E-100, SUB 165



## Comments of ElectriCities and NC Public Power

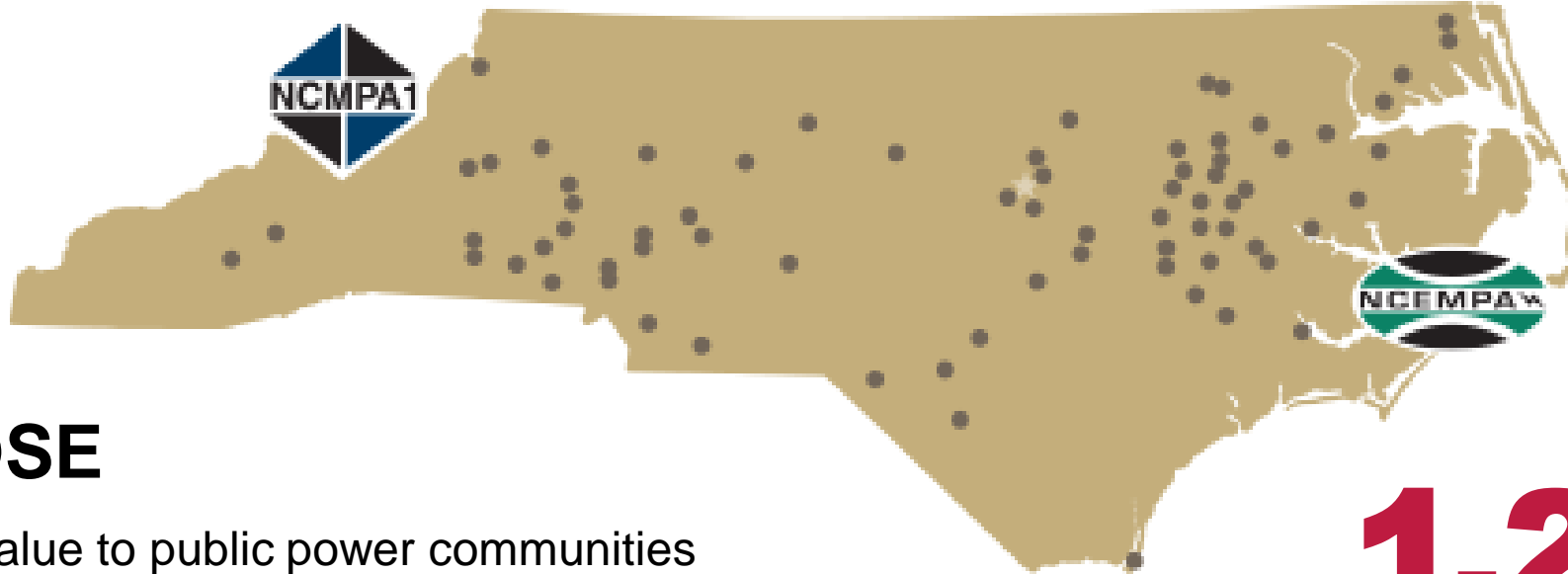
NCUC Technical Conference on NARUC-NASEO Task Force  
*March 9, 2021*



# WHAT ARE PUBLIC POWER UTILITIES?

Public power utilities are like our public schools and libraries: a division of local government, owned by the community, run by boards of local officials accountable to the citizens.





## PURPOSE

Delivering value to public power communities through collective strength, wisdom, and action while promoting a more successful future for our citizens.

**1.2 MILLION  
PEOPLE**

NC Public Power illuminates the homes and workplaces of more than 1.2 million people in North Carolina

# ElectriCities N.C. Member List

## NCMPA1

Albemarle  
Bostic  
Cherryville  
Cornelius  
Drexel  
Gastonia  
Granite Falls  
High Point  
Huntersville  
Landis  
Lexington  
Lincolnton  
Maiden  
Monroe  
Morganton  
Newton  
Pineville  
Shelby  
Statesville

## NCEMPA

Apex  
Ayden  
Belhaven  
Benson  
Clayton  
Edenton  
Elizabeth City  
Farmville  
Fremont  
Greenville Utilities  
Commission  
Hamilton  
Hertford  
Hobgood  
Hookerton  
Kinston  
La Grange  
Laurinburg  
Louisburg

Lumberton  
New Bern  
Pikeville  
Red Springs  
Robersonville  
Rocky Mount  
Scotland Neck  
Selma  
Smithfield  
Southport  
Tarboro  
Wake Forest  
Washington  
Wilson

## NON-POWER AGENCY

Concord  
Dallas  
East Carolina Univ.  
Elizabeth City State Univ.  
Enfield  
Fayetteville PWC  
Forest City  
Fountain  
Kings Mountain  
Macclesfield  
New River Light & Power (Boone)  
North Carolina State Univ.  
Pinetops  
Sharpsburg  
Stantonsburg  
UNC-Chapel Hill  
Walstonburg  
Waynesville  
Windsor  
Winterville



# ABOUT ELECTRICITIES

## Services:

- Wholesale Power Administration
- Emergency Assistance / Mutual Aid
- Legislative and Regulatory Affairs
- Economic Development
- Commercial & Industrial Services
- Corporate Communications
- Learning & Development
- Electric Distribution System Operations
- Customer Service



# NCMPA1 Generation Resources



Largest co-owner of  
Catawba Nuclear Station



## **Supplemental, grid edge and customer resources:**

- NCMPA1-Owned: 89 MW
- Customer-Owned: 96 MW
- SEPA Hydro: 67 MW
- Utility Scale Solar: 1 MW



Contracted peaking and  
balancing resources  
providing resource  
adequacy



# The Power Agencies: **NCMPA1**



**19** North Carolina Municipal Power Agency  
1 (NCMPA1) = **19 cities and towns** in  
western North Carolina

**NCMPA1**  
**RESOURCE MIX\***  
**TO SERVE LOAD**



**90%**  
**Nuclear**



**10%**  
**Hydro & Other  
Renewables**

# NCEMPA Generation Resources



Full Requirements  
Power Purchase  
Agreement with Duke  
Energy Progress (DEP)



## Supplemental, grid edge and customer resources:

- NCEMPA-Owned: 38 MW
- Customer-Owned: 210 MW
- SEPA Hydro: 28 MW
- PURPA Utility Scale Solar: 153 MW
- Batteries: 2 MW equivalent
- Voltage Control: 25 MW
- Load control switches: 75 MW





# THE POWER AGENCIES: NCEMPA



# 32

North Carolina Eastern Municipal  
Power Agency (NCEMPA) = 32 cities  
and towns in eastern North Carolina

**NCEMPA**  
**RESOURCE MIX\***  
**TO SERVE LOAD**



**47%**  
**Nuclear**



**35%**  
**Natural Gas  
and Oil**

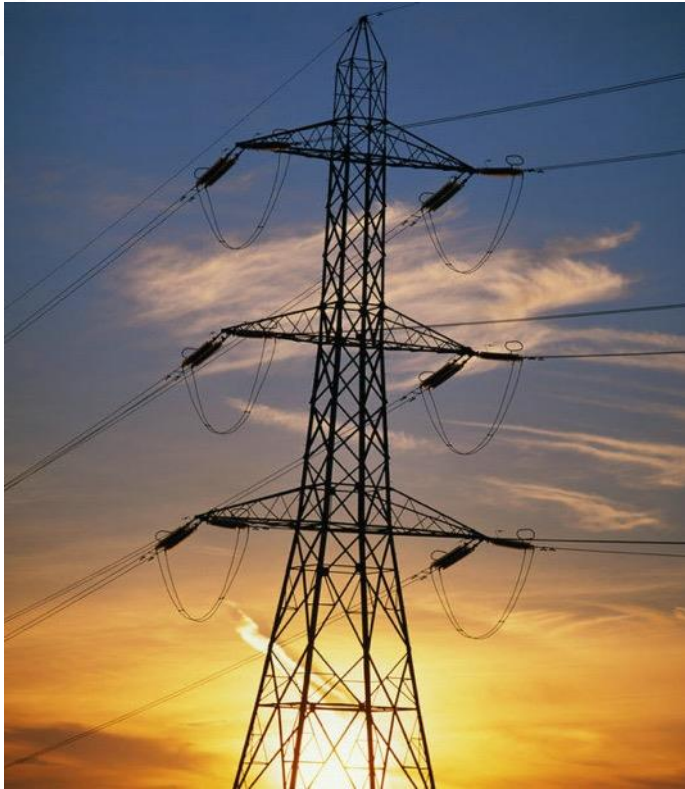


**8%**  
**Coal**



**10%**  
**Hydro & Other  
Renewables**

# NC Transmission Planning Collaborative



- Formed by NC load serving utilities
- Process satisfies FERC Orders 890 and 1000 requirements
- Provides transparency for transmission planning process
- Includes stakeholder process
- Transmission projects  $\geq$  \$10 million

# Power Agencies' Coordination Framework

- Network Integration Transmission Service Agreement (NITSA) and Network Operating Agreement (NOA)
- Dominion Transmission Agreement (NCEMPA only)
- Full-Requirements Power Purchase Agreement (NCEMPA only)
- NERC compliance
- NC Renewable Energy and Energy Efficiency Portfolio (REPS) compliance
- Real-time data exchange with Duke
- NC Transmission Planning Collaborative (NCTPC)



# Distribution Planning



**Coordination with  
DEP/DEC**



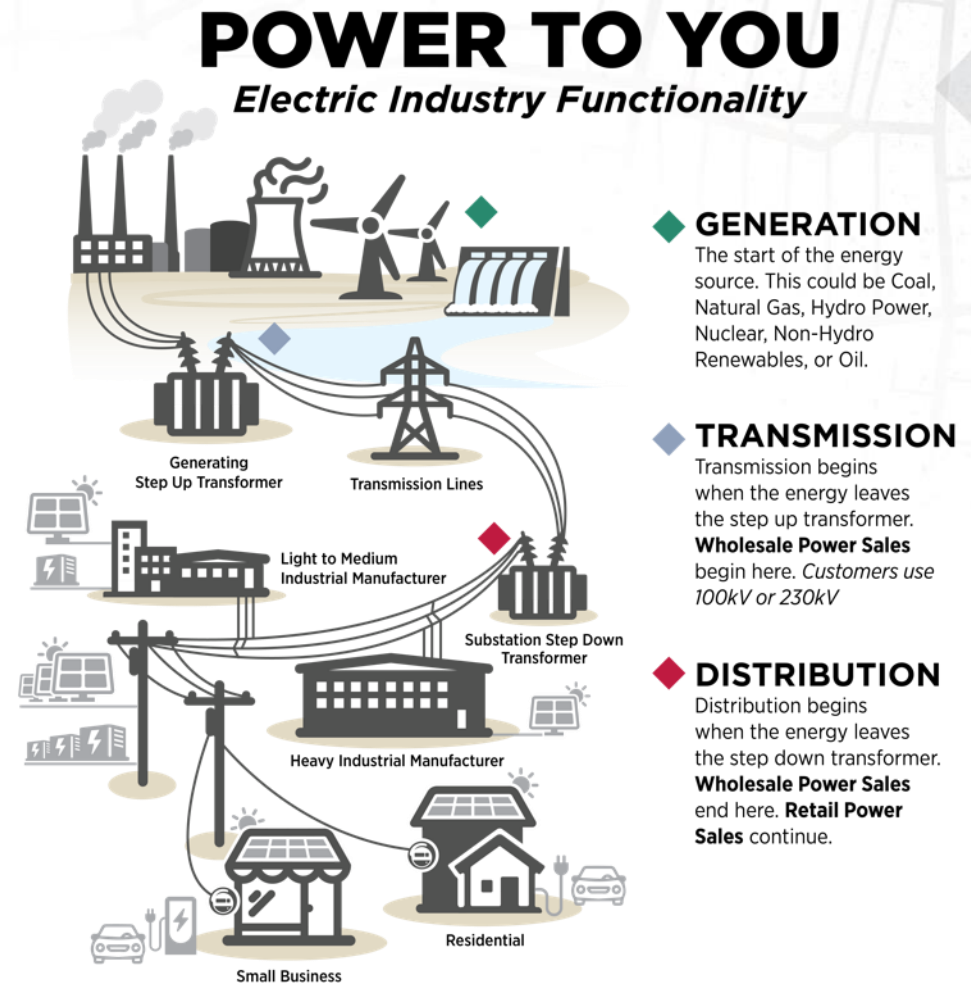
**Interconnection process  
consistent with  
other NC utilities**



**Investments in energy  
management system  
technology**

# Distribution Planning: Impact of DERs

- The electric industry is transitioning from a traditional, centralized power grid to a more distributed one integrating resources behind the customer's meter.
- Penetration rates are currently low but growing in Power Agency members.
- ElectriCities provides standardized Interconnection Standards and technical support for integrating DERs into electric Member distribution systems.
- Initiatives underway to adopt advanced modeling and tools required to maximize the value of DERs.



**ELECTRICITIES of NC**

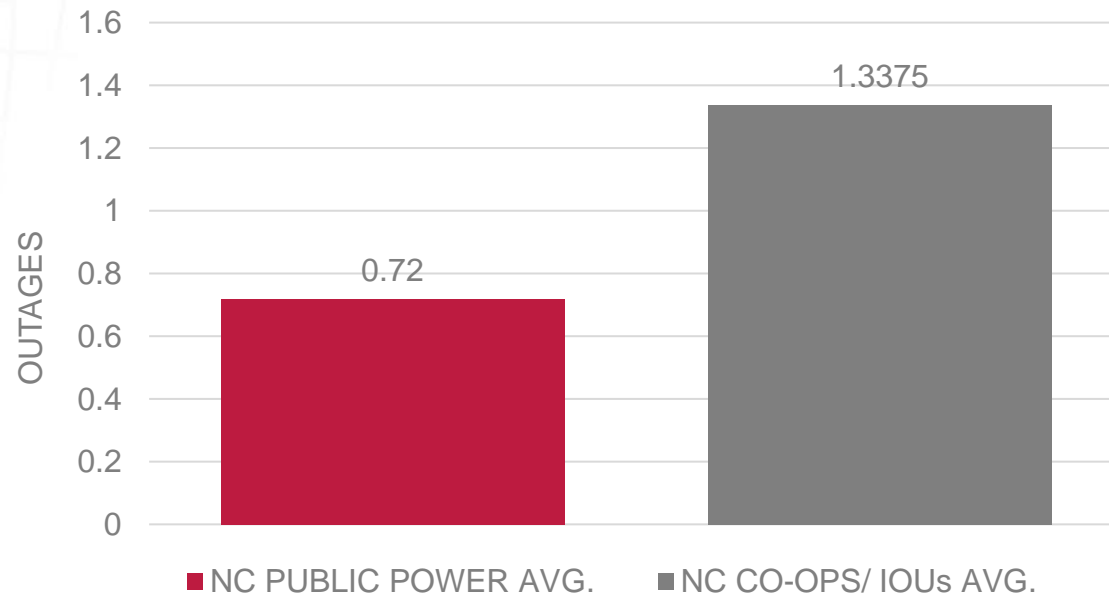
DISTRIBUTED ENERGY RESOURCES (DERs) shown in gray.



# Distribution Operations: Reliability

*Neighbor helping Neighbor*

**Avg. No. of Customer Outages - 2019**

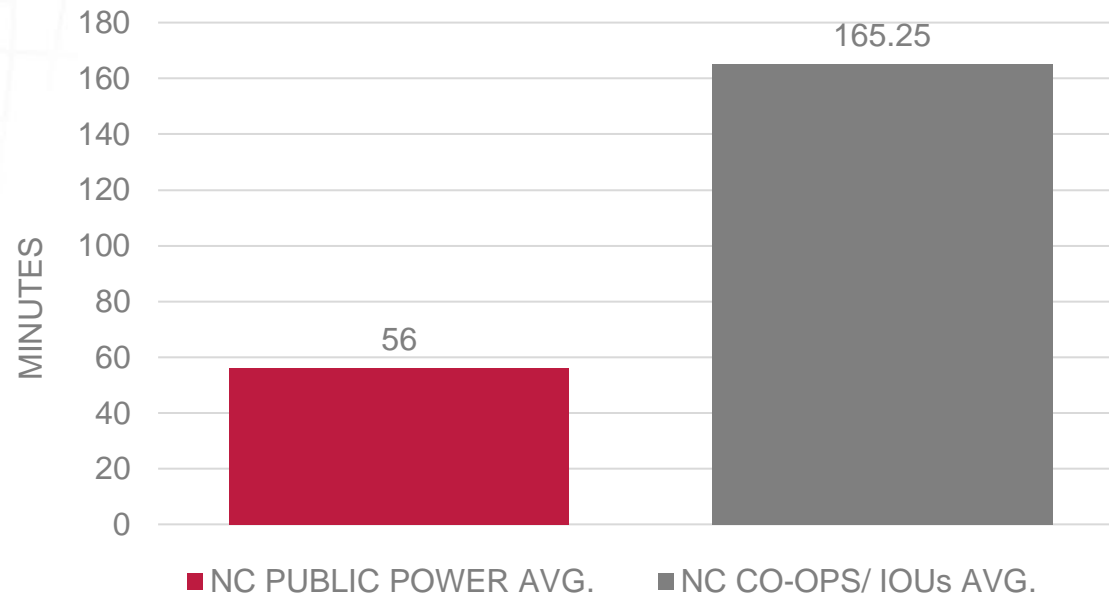




# Distribution Operations: Reliability

*Neighbor helping Neighbor*

**Avg. Outage Time Per Customer - 2019**



# Local Control

Decisions made in local communities

- Increased transparency
- Support for local government
- More efficient operations
- Support local priorities, values, and choices of the community





# Thoughts on Enhanced Planning

- Comprehensive planning and coordination currently in place
  - Regulatory requirements
  - Contractual requirements
- Consider enhancement of existing efforts within the current regulatory and contractual construct
  - Duke's ISOP
  - Dominion's IDP
  - NCTPC
- Power Agencies are best suited to integrate DERs with the distribution, transmission and power supply planning process
  - We look forward to continued dialogue and engagement on enhanced planning issues





*The energy behind public power*

[www.electricities.com](http://www.electricities.com)

## STAY CONNECTED



@ElectriCitiesNC



@ElectriCitiesNC



@ElectriCitiesNC



[company/electricitiesnc](https://www.linkedin.com/company/electricitiesnc)



NC Public Power Channel



OFFICIAL COPY

Mar 10 2021