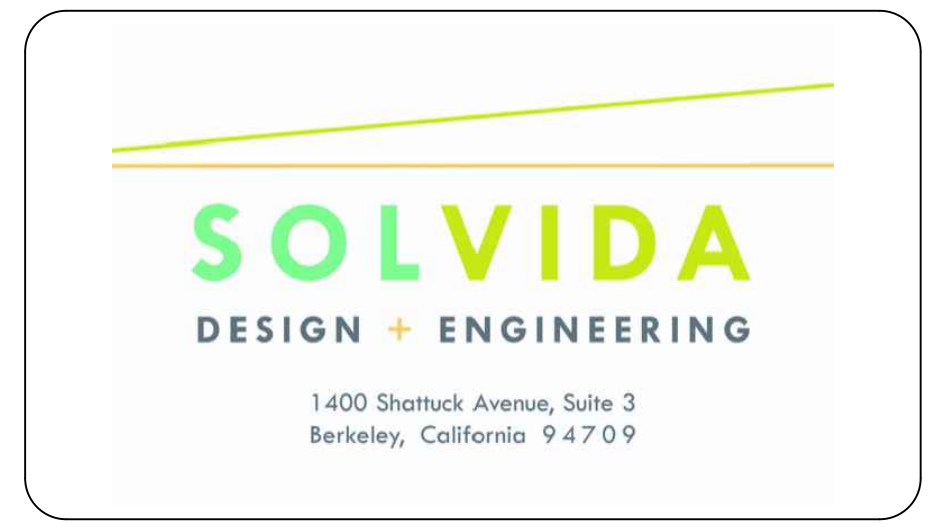


LEGEND	
	78 MODULE TRACKER ROW
	52 MODULE TRACKER ROW
	EQUIPMENT RACK (TYP. OF 40) (1) INVERTER, (1) MV TRANSFORMER, (1) ENERGY STORAGE
	FENCE
	PROPERTY LINE
	EASEMENT
	LIMIT OF DISTURBANCE (LOD)
	20' GRAVEL ACCESS ROAD
	(E) OH LINE
	MEDIUM VOLTAGE OH LINE
	(E) PUBLIC ROAD
	POTENTIAL WETLANDS
	VEGETATIVE BUFFER
	(E) RESIDENCES
	DO NOT DISTURB ZONE

PROJECT DETAILS	
SUMAC SOLAR	
SYSTEM SIZE AC @ POI	120,000.00 kW*
INVERTER RATING	3,200 kW
TOTAL INVERTER QTY	40
RACKING	HSAT
TILT ANGLE	0°
AZIMUTH	180°
INTER-ROW SPACING	19.83'
PITCH	26.44'
GCR	25%
AVAILABLE PROPERTY AREA	3,420.32 ACRES
FENCED AREA	1,151.00 ACRES

* OUTPUT CONTROLLED BY PLANT CONTROLLER

- NOTES:
- EXISTING SITE GRADES AND DRAINAGE PATTERNS SHALL BE MAINTAINED.
 - FINAL DETERMINATION OF JURISDICTIONAL WETLANDS SUBJECT TO US ARMY COE APPROVAL. PANEL PLACEMENT AND CONSTRUCTION WILL COMPLY WITH ALL FEDERAL AND STATE WATER QUALITY / WETLANDS PERMITTING REQUIREMENTS.
 - FINAL PANEL PLACEMENT SUBJECT TO CHANGE WITHIN LIMIT OF DISTURBANCE (LOD) LINE DEPICTED ON SITE PLAN.



SUMAC

1281-1117 WOODARD RD
WINDSOR, NC 27983

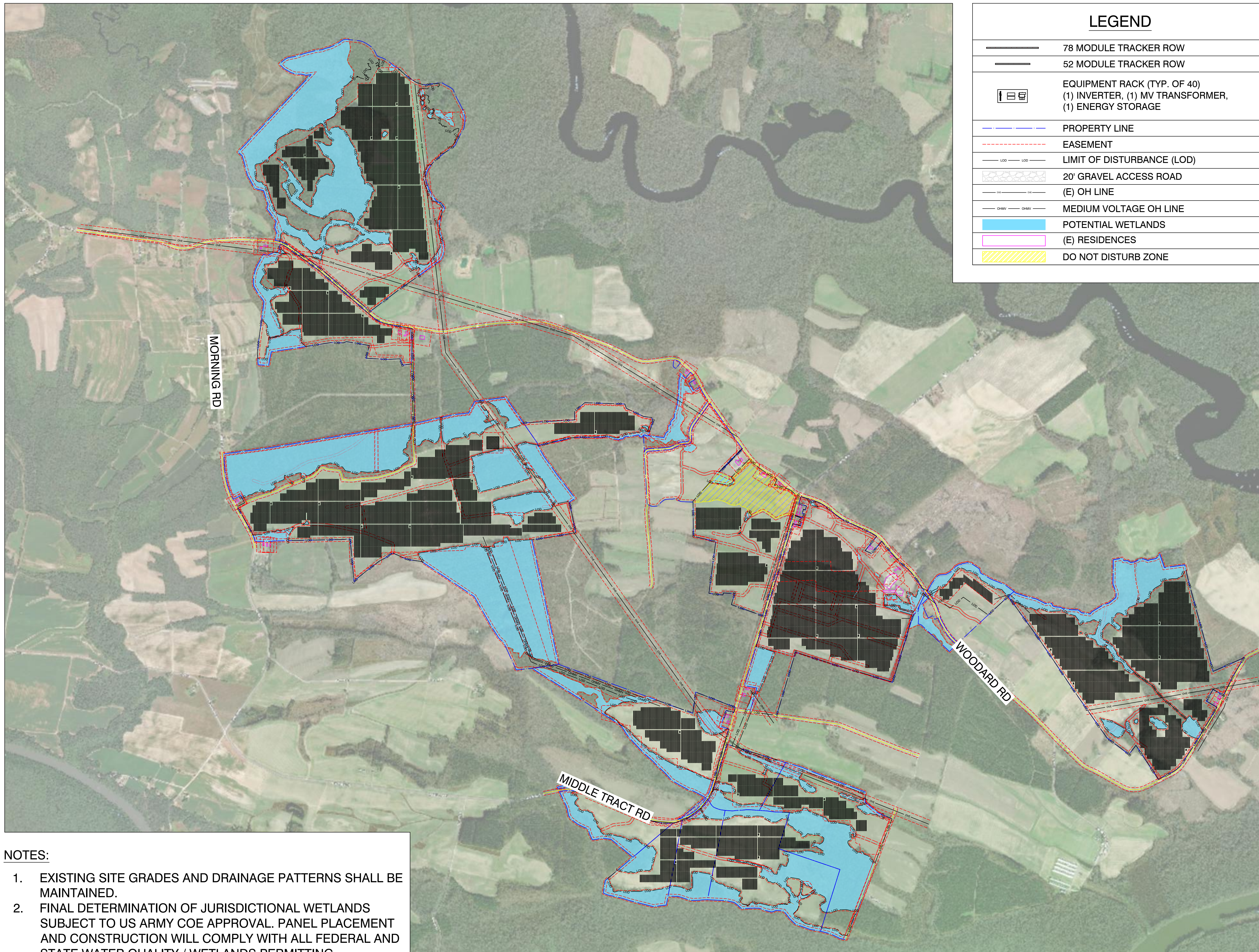
35.924892°N
76.889731°W

REV. NO	DESCRIPTION	DATE
0	PRELIMINARY	05/14/20

SHEET TITLE:
PERMITTING LAYOUT

PROJ. MGR.	PROJ. ENGR. SDE	DATE:
DRAWN BY: LR	CHECKED BY:	05/14/20
DRAWING NO.	SCALE:	AS SHOWN

PV-100



LEGEND	
	78 MODULE TRACKER ROW
	52 MODULE TRACKER ROW
	EQUIPMENT RACK (TYP. OF 40) (1) INVERTER, (1) MV TRANSFORMER, (1) ENERGY STORAGE
	PROPERTY LINE
	EASEMENT
	LIMIT OF DISTURBANCE (LOD)
	20' GRAVEL ACCESS ROAD
	(E) OH LINE
	MEDIUM VOLTAGE OH LINE
	POTENTIAL WETLANDS
	(E) RESIDENCES
	DO NOT DISTURB ZONE

- NOTES:**
- EXISTING SITE GRADES AND DRAINAGE PATTERNS SHALL BE MAINTAINED.
 - FINAL DETERMINATION OF JURISDICTIONAL WETLANDS SUBJECT TO US ARMY COE APPROVAL. PANEL PLACEMENT AND CONSTRUCTION WILL COMPLY WITH ALL FEDERAL AND STATE WATER QUALITY / WETLANDS PERMITTING REQUIREMENTS.
 - FINAL PANEL PLACEMENT SUBJECT TO CHANGE WITHIN LIMIT OF DISTURBANCE (LOD) LINE DEPICTED ON SITE PLAN.

1 LIMIT OF DISTURBANCE
PV-101

Scale: 1"=1100'

1400 Shattuck Avenue, Suite 3
Berkeley, California 94709

SUMAC

1281-1117 WOODARD RD
WINDSOR, NC 27983

35.924892°N
76.889731°W

REV. NO	DESCRIPTION	DATE
0	PRELIMINARY	05/14/20

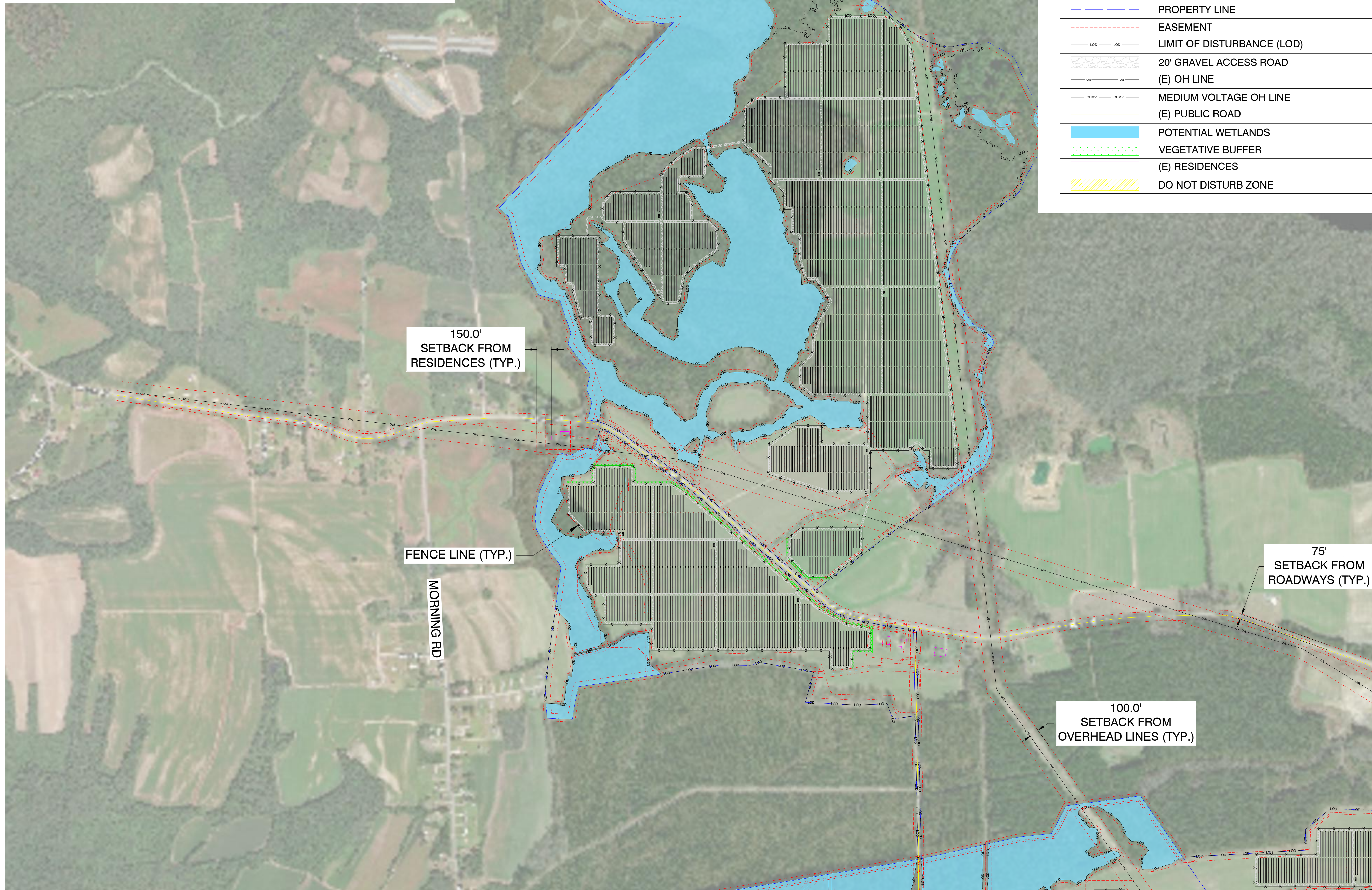
SHEET TITLE:
PERMITTING LAYOUT

PROJ. MGR.	PROJ. ENGR. SDE	DATE: 05/14/20
DRAWN BY: LR	CHECKED BY:	SCALE: AS SHOWN
DRAWING NO.		

PV-101

NOTES:

1. FINAL DETERMINATION OF JURISDICTIONAL WETLANDS SUBJECT TO US ARMY COE APPROVAL. PANEL PLACEMENT AND CONSTRUCTION WILL COMPLY WITH ALL FEDERAL AND STATE WATER QUALITY / WETLANDS PERMITTING REQUIREMENTS.
2. FINAL PANEL PLACEMENT SUBJECT TO CHANGE WITHIN LIMIT OF DISTURBANCE (LOD) LINE DEPICTED ON SITE PLAN.



LEGEND	
	78 MODULE TRACKER ROW
	52 MODULE TRACKER ROW
	EQUIPMENT RACK (TYP. OF 40) (1) INVERTER, (1) MV TRANSFORMER, (1) ENERGY STORAGE
	FENCE
	PROPERTY LINE
	EASEMENT
	LIMIT OF DISTURBANCE (LOD)
	20' GRAVEL ACCESS ROAD
	(E) OH LINE
	MEDIUM VOLTAGE OH LINE
	(E) PUBLIC ROAD
	POTENTIAL WETLANDS
	VEGETATIVE BUFFER
	(E) RESIDENCES
	DO NOT DISTURB ZONE

150.0'
SETBACK FROM
RESIDENCES (TYP.)

FENCE LINE (TYP.)

MORNING RD

75'
SETBACK FROM
ROADWAYS (TYP.)

100.0'
SETBACK FROM
OVERHEAD LINES (TYP.)

SOLVIDA
DESIGN + ENGINEERING
1400 Shattuck Avenue, Suite 3
Berkeley, California 94709

geenex

SUMAC

1281-1117 WOODARD RD
WINDSOR, NC 27983

35.924892°N
76.889731°W

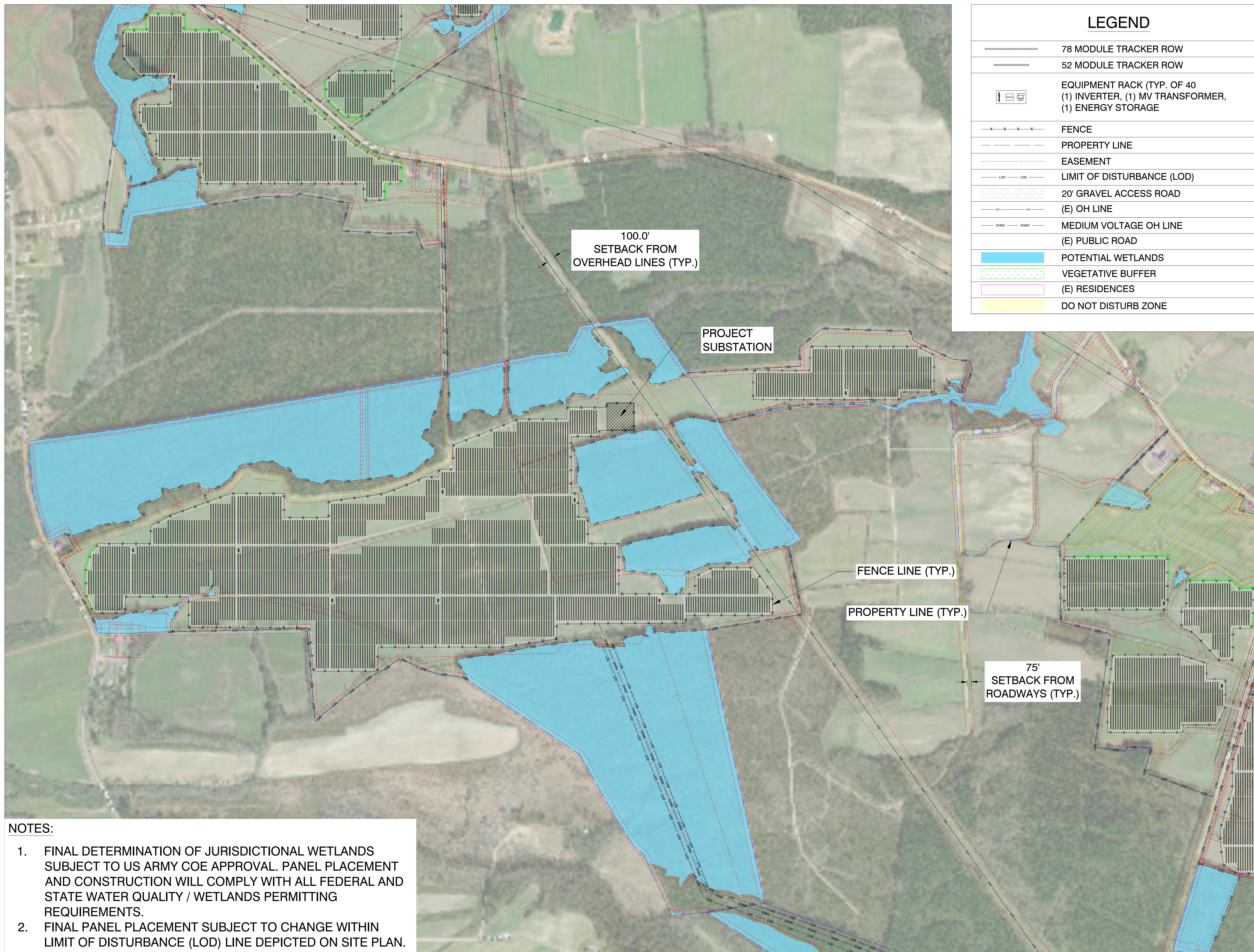
REV. NO	DESCRIPTION	DATE
0	PRELIMINARY	05/14/20

SHEET TITLE:
SITE PLAN DETAILS

PROJ. MGR.	PROJ. ENGR. SDE	DATE: 05/14/20
DRAWN BY: LR	CHECKED BY:	SCALE: AS SHOWN
DRAWING NO.		

PV-102

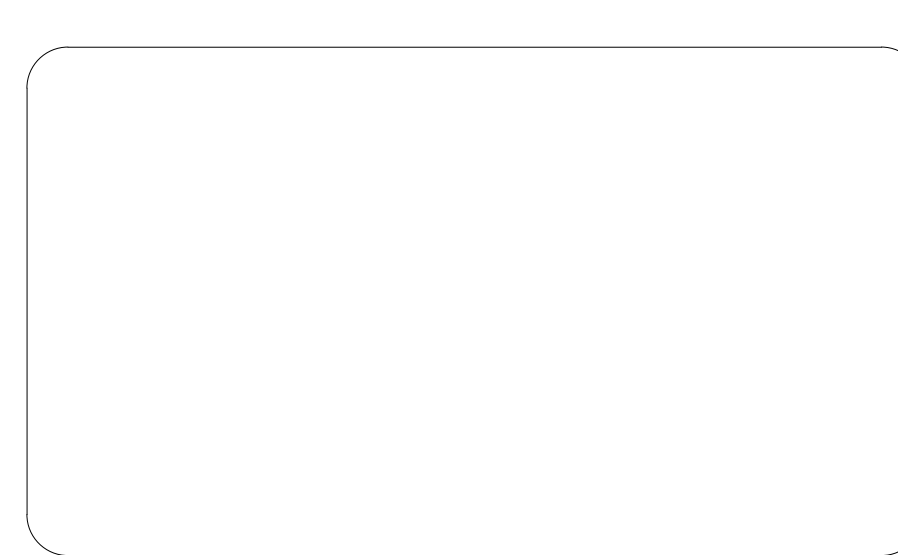
1 SITE PLAN
PV-102
Scale: 1"=500'



LEGEND	
	78 MODULE TRACKER ROW
	52 MODULE TRACKER ROW
	EQUIPMENT RACK (TYP. OF 40 (1) INVERTER, (1) MV TRANSFORMER, (1) ENERGY STORAGE
	FENCE
	PROPERTY LINE
	EASEMENT
	LIMIT OF DISTURBANCE (LOD)
	20' GRAVEL ACCESS ROAD
	(E) OH LINE
	MEDIUM VOLTAGE OH LINE
	(E) PUBLIC ROAD
	POTENTIAL WETLANDS
	VEGETATIVE BUFFER
	(E) RESIDENCES
	DO NOT DISTURB ZONE

- NOTES:**
- FINAL DETERMINATION OF JURISDICTIONAL WETLANDS SUBJECT TO US ARMY COE APPROVAL. PANEL PLACEMENT AND CONSTRUCTION WILL COMPLY WITH ALL FEDERAL AND STATE WATER QUALITY / WETLANDS PERMITTING REQUIREMENTS.
 - FINAL PANEL PLACEMENT SUBJECT TO CHANGE WITHIN LIMIT OF DISTURBANCE (LOD) LINE DEPICTED ON SITE PLAN.

1 SITE PLAN
 PV-103 Scale: 1"=500'



SUMAC

1281-1117 WOODARD RD
 WINDSOR, NC 27983

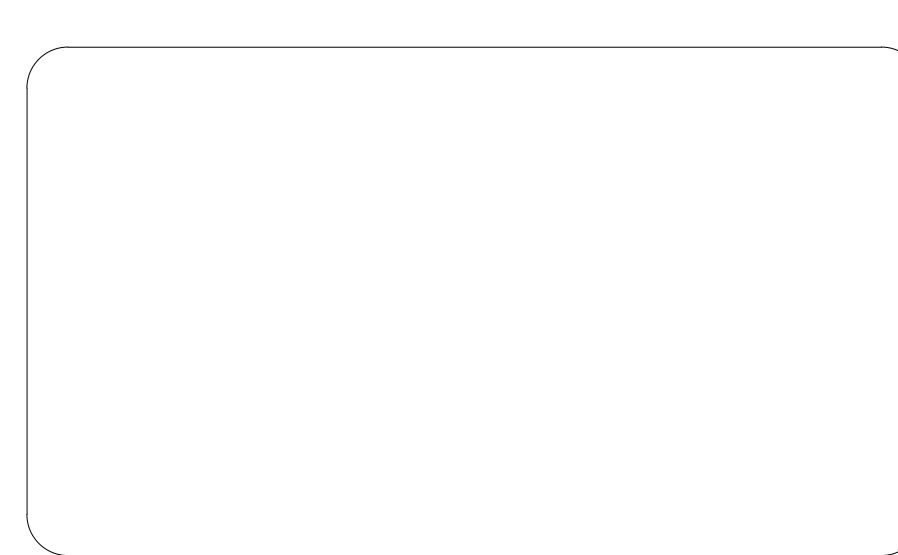
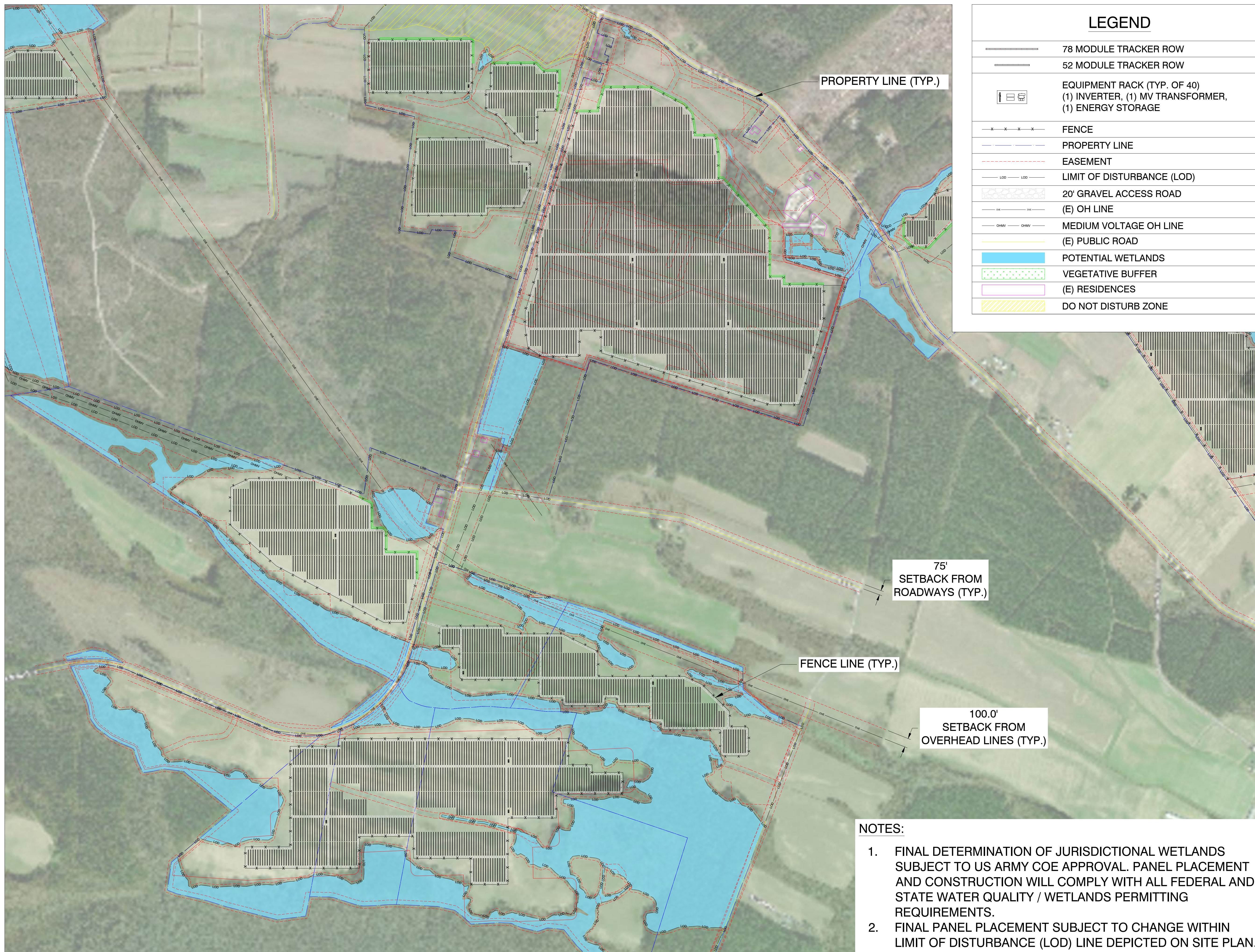
35.924892°N
 76.889731°W

REV. NO	DESCRIPTION	DATE
0	PRELIMINARY	05/14/20

SHEET TITLE:
SITE PLAN DETAILS

PROJ. MGR.	PROJ. ENGR. SDE	DATE: 05/14/20
DRAWN BY: LR	CHECKED BY:	SCALE: AS SHOWN
DRAWING NO.		

PV-103



SUMAC

1281-1117 WOODARD RD
WINDSOR, NC 27983

35.924892°N
76.889731°W

REV. NO	DESCRIPTION	DATE
0	PRELIMINARY	05/14/20

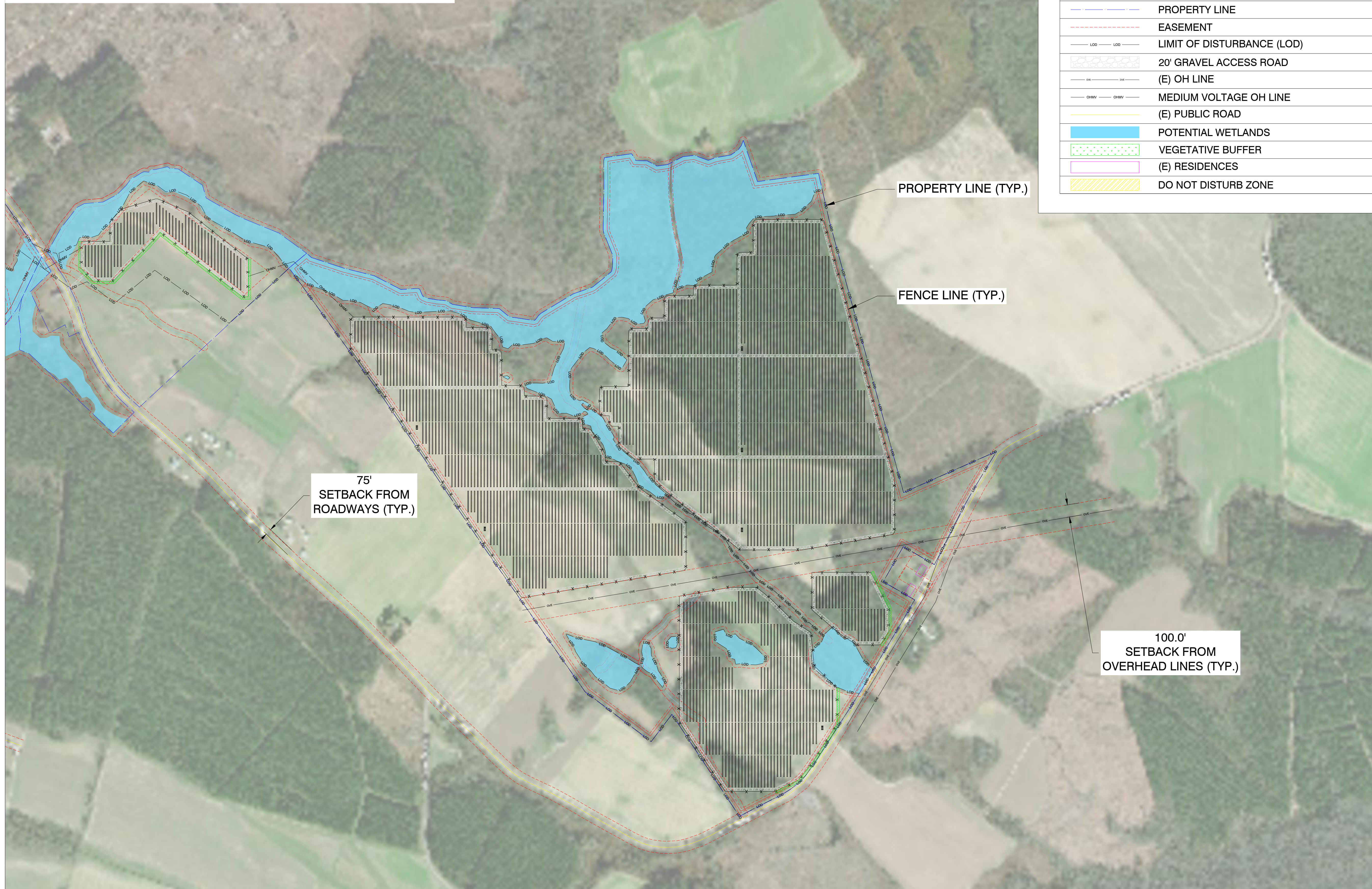
SHEET TITLE:
SITE PLAN DETAILS

PROJ. MGR.	PROJ. ENGR. SDE	DATE: 05/14/20
DRAWN BY: LR	CHECKED BY:	SCALE: AS SHOWN
DRAWING NO.		

PV-104

NOTES:

1. FINAL DETERMINATION OF JURISDICTIONAL WETLANDS SUBJECT TO US ARMY COE APPROVAL. PANEL PLACEMENT AND CONSTRUCTION WILL COMPLY WITH ALL FEDERAL AND STATE WATER QUALITY / WETLANDS PERMITTING REQUIREMENTS.
2. FINAL PANEL PLACEMENT SUBJECT TO CHANGE WITHIN LIMIT OF DISTURBANCE (LOD) LINE DEPICTED ON SITE PLAN.



LEGEND	
	78 MODULE TRACKER ROW
	52 MODULE TRACKER ROW
	EQUIPMENT RACK (TYP. OF 40) (1) INVERTER, (1) MV TRANSFORMER, (1) ENERGY STORAGE
	FENCE
	PROPERTY LINE
	EASEMENT
	LIMIT OF DISTURBANCE (LOD)
	20' GRAVEL ACCESS ROAD
	(E) OH LINE
	MEDIUM VOLTAGE OH LINE
	(E) PUBLIC ROAD
	POTENTIAL WETLANDS
	VEGETATIVE BUFFER
	(E) RESIDENCES
	DO NOT DISTURB ZONE

1400 Shattuck Avenue, Suite 3
Berkeley, California 94709

SUMAC

1281-1117 WOODARD RD
WINDSOR, NC 27983

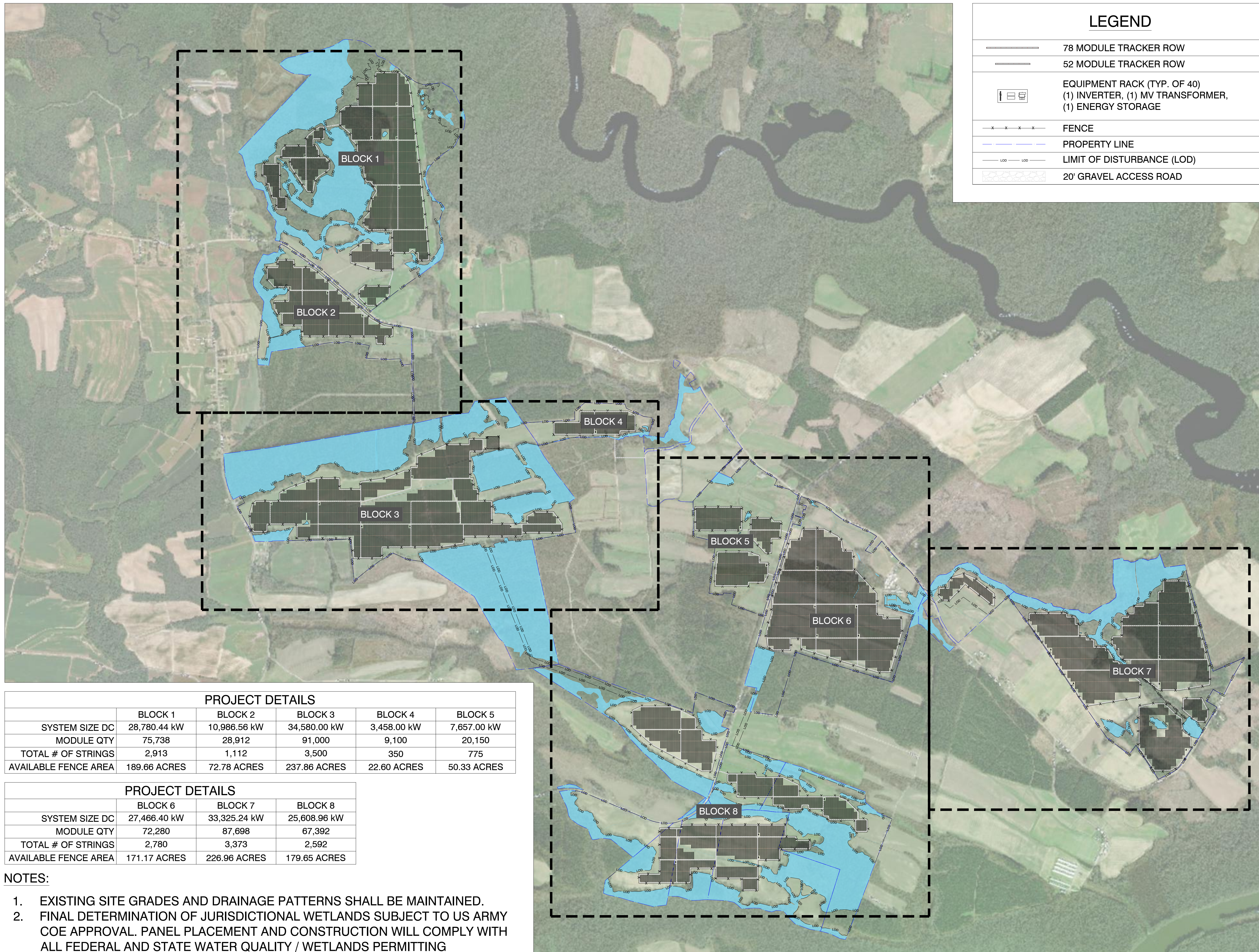
35.924892°N
76.889731°W

REV. NO	DESCRIPTION	DATE
0	PRELIMINARY	05/14/20

SHEET TITLE:
SITE PLAN DETAILS

PROJ. MGR.	PROJ. ENGR. SDE	DATE: 05/14/20
DRAWN BY: LR	CHECKED BY:	SCALE: AS SHOWN
DRAWING NO.		

PV-105



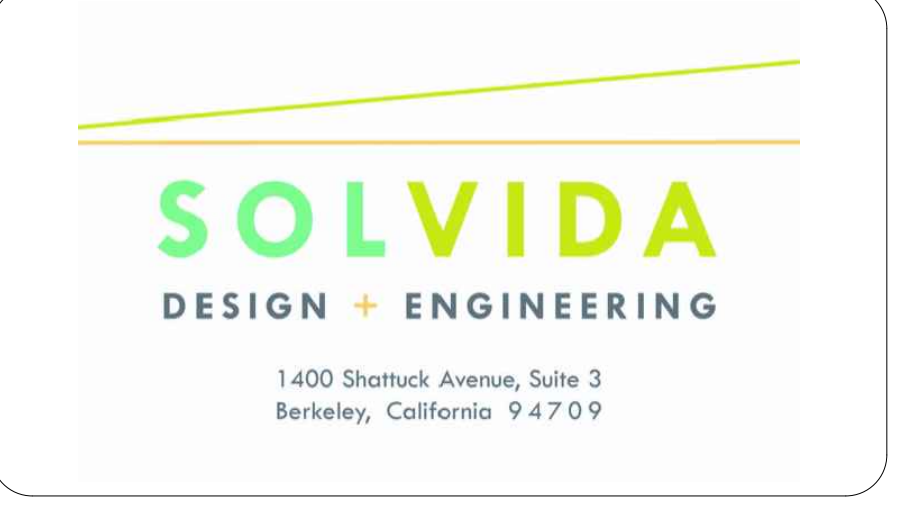
LEGEND	
	78 MODULE TRACKER ROW
	52 MODULE TRACKER ROW
	EQUIPMENT RACK (TYP. OF 40) (1) INVERTER, (1) MV TRANSFORMER, (1) ENERGY STORAGE
	FENCE
	PROPERTY LINE
	LIMIT OF DISTURBANCE (LOD)
	20' GRAVEL ACCESS ROAD

PROJECT DETAILS					
	BLOCK 1	BLOCK 2	BLOCK 3	BLOCK 4	BLOCK 5
SYSTEM SIZE DC	28,780.44 kW	10,986.56 kW	34,580.00 kW	3,458.00 kW	7,657.00 kW
MODULE QTY	75,738	28,912	91,000	9,100	20,150
TOTAL # OF STRINGS	2,913	1,112	3,500	350	775
AVAILABLE FENCE AREA	189.66 ACRES	72.78 ACRES	237.86 ACRES	22.60 ACRES	50.33 ACRES

PROJECT DETAILS			
	BLOCK 6	BLOCK 7	BLOCK 8
SYSTEM SIZE DC	27,466.40 kW	33,325.24 kW	25,608.96 kW
MODULE QTY	72,280	87,698	67,392
TOTAL # OF STRINGS	2,780	3,373	2,592
AVAILABLE FENCE AREA	171.17 ACRES	226.96 ACRES	179.65 ACRES

- NOTES:
- EXISTING SITE GRADES AND DRAINAGE PATTERNS SHALL BE MAINTAINED.
 - FINAL DETERMINATION OF JURISDICTIONAL WETLANDS SUBJECT TO US ARMY COE APPROVAL. PANEL PLACEMENT AND CONSTRUCTION WILL COMPLY WITH ALL FEDERAL AND STATE WATER QUALITY / WETLANDS PERMITTING REQUIREMENTS.
 - FINAL PANEL PLACEMENT SUBJECT TO CHANGE WITHIN LIMIT OF DISTURBANCE (LOD) LINE DEPICTED ON SITE PLAN.

1 ARRAY PLAN
PV-106
Scale: 1"=1100'



SUMAC

1281-1117 WOODARD RD
WINDSOR, NC 27983

35.924892°N
76.889731°W

REV. NO	DESCRIPTION	DATE
0	PRELIMINARY	05/14/20

SHEET TITLE:
SITE PLAN

PROJ. MGR.	PROJ. ENGR. SDE	DATE: 05/14/20
DRAWN BY: LR	CHECKED BY:	SCALE: AS SHOWN
DRAWING NO.		

PV-106