



0 550 1100 2200  
SCALE: 1" = 1100'

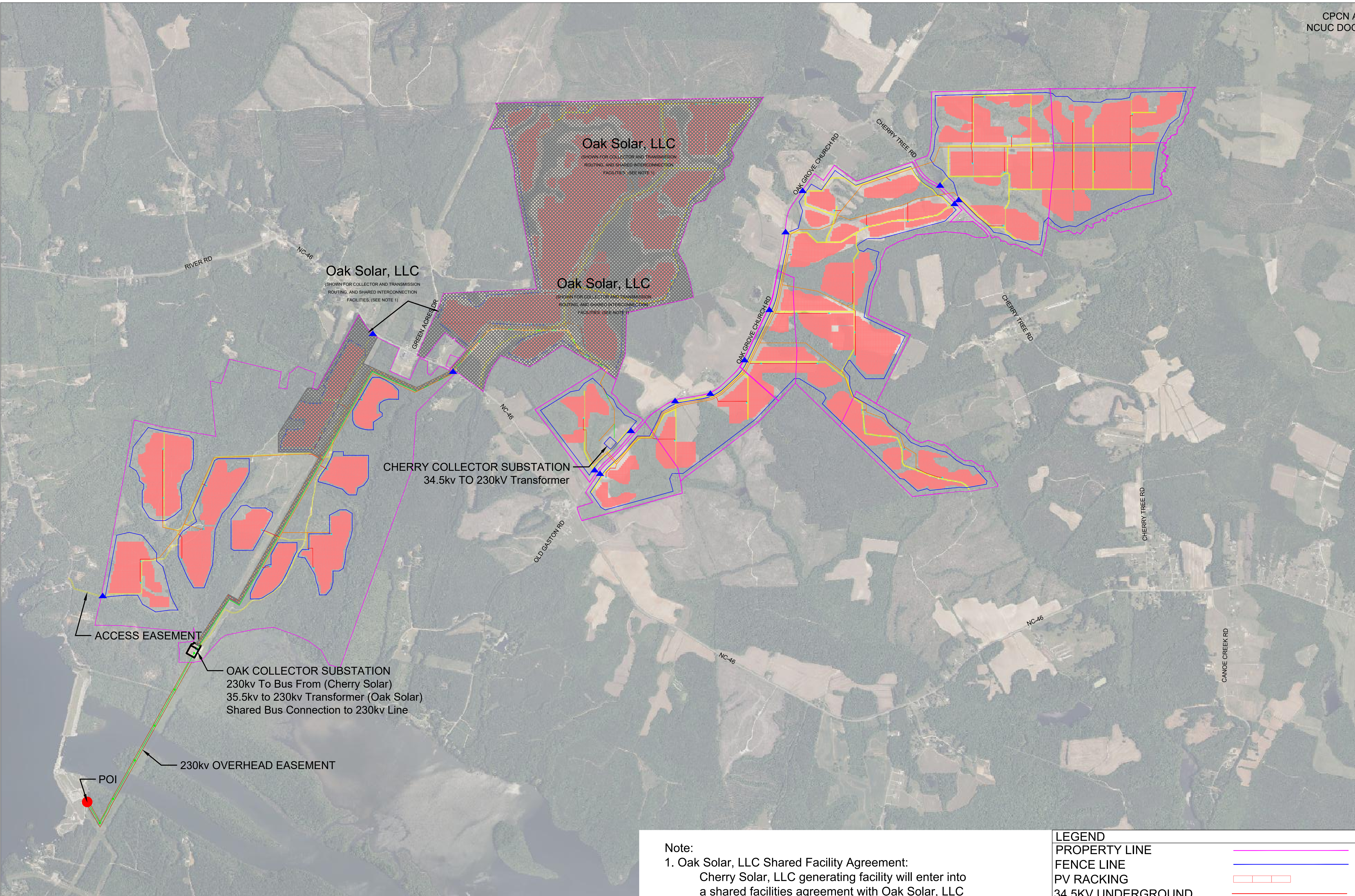
SUNENERGY1

595 Summer St, 4th Floor  
Stamford, CT 06901  
(203) 983-7875  
www.SunEnergy1.com

NO.	DATE	DESCRIPTION
1	11/06/20	CHERRY SOLAR PRELIMINARY LAYOUT
2	02/23/23	UPDATED LAYOUT
3	06/05/23	UPDATED LAYOUT
4		
5		
6		
CHECKED		
DRAWN		
DS		
CJM		

CHERRY SOLAR, LLC PV POWER PLANT IN GASTON, NORTH CAROLINA		SCALE	11/06/2020	08/25/2023
JOB NO.		AC2-093		
LATEST REVISION				

SITE LAYOUT OVERVIEW	
DRAWING NO. SL2.0	



Note:  
1. Oak Solar, LLC Shared Facility Agreement:  
Cherry Solar, LLC generating facility will enter into a shared facilities agreement with Oak Solar, LLC to facilitate shared usage of the interconnection facilities built to accommodate Oak Solar, LLC. Oak Solar, LLC and Cherry Solar, LLC are both affiliates of SunEnergy1, LLC.

LEGEND	
PROPERTY LINE	
FENCE LINE	
PV RACKING	
34.5KV UNDERGROUND	
34.5 KV OVERHEAD POWER	
230 KV OVERHEAD POWER	
SITE ACCESS PATHS	
SITE ENTRANCE	
INVERTER/TRANSFORMER	